



Maxwell

Le

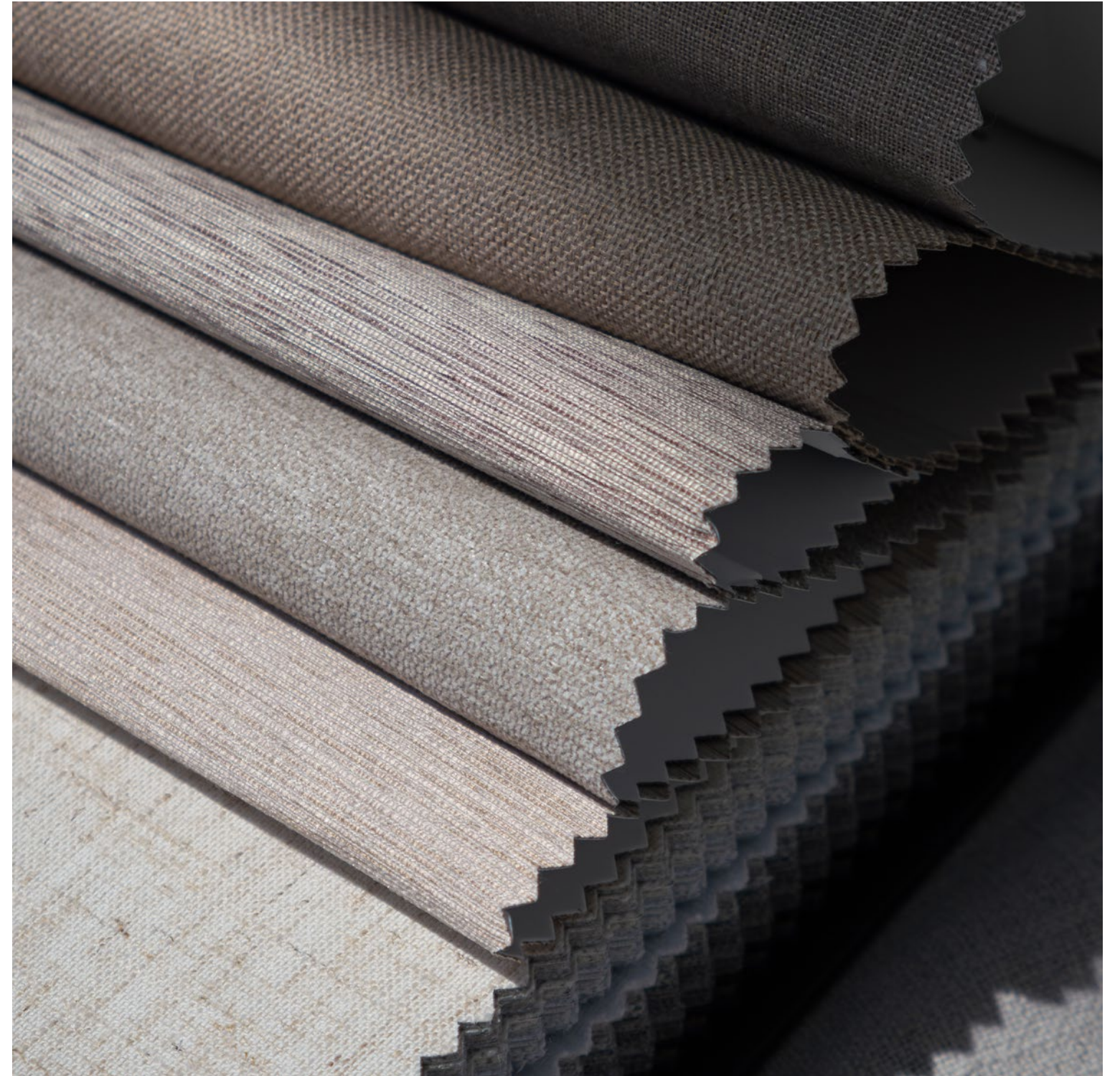
SOLSTICE

2024

BLACKOUT III

The 17 new 3-pass blackout styles of Blackout III, all passing NFPA 701 and CAN ULC S109, make this a truly one-stop compilation. All patterns are 100% blackout, and are diverse in their surface effects. Standout Umbra is double-faced for excellent versatility, with the light blocking layer invisible within the fabric.

Maxwell





Performance Wovens is the ultimate cleanability performance series for residential & crossover contract upholstery. Exclusive, fashion-forward feature designs coordinate & complement a range of small-scale patterns, textures & solids, all styled by color.

All patterns are stocked with either FibreGuard, ALTA, Crypton Home, InsideOut or MaxGuard permanent soil & stain resistant technology. InsideOut patterns have the added benefit of high UV yarns, allowing for use in indoor or outdoor high sun exposure settings, as well as being quick-drying, mildew resistant & cleanable with a dilution of bleach. *Maxwell*

PERFORMANCE *Wovens*

Pure & Simple



SATIN XVI

Zaitun is a luxurious 100% cotton satin with a sophisticated dull sheen and crisp, dressy hand. The name Zaitun derives from the Arabic name for the city in China where satin was famously woven. This chic, washable construction is available in 60 colorways, from subtly tinted neutrals to saturated gem-inspired hues. *Maxwell*



This follow-up book in the wide-width drapery category adds three new constructions. Luca is a 122" heathered effect faux linen; Giorgio is a 118" wide full-bodied cotton-look; and Sandro is a linen-blend semi-sheer in a soft palette of sorbet-inspired shades. Luca and Giorgio cross over from high-end residential settings into hospitality spaces, passing NFPA 701 and CAN ULC S109. *Maxwell*

Wide Width Basics II

MILE ROCK BEACH



1. LUCA # 124 Fresco
Wide Width Basics II



2. BAROLO # 637 Cyclone
Performance Wovens
Vol. VII



3. CRISTOBAL # 901 Cotswold
Telafina Season XV



4. DOLCETTO # 747 Buff
Performance Wovens
Vol. VII

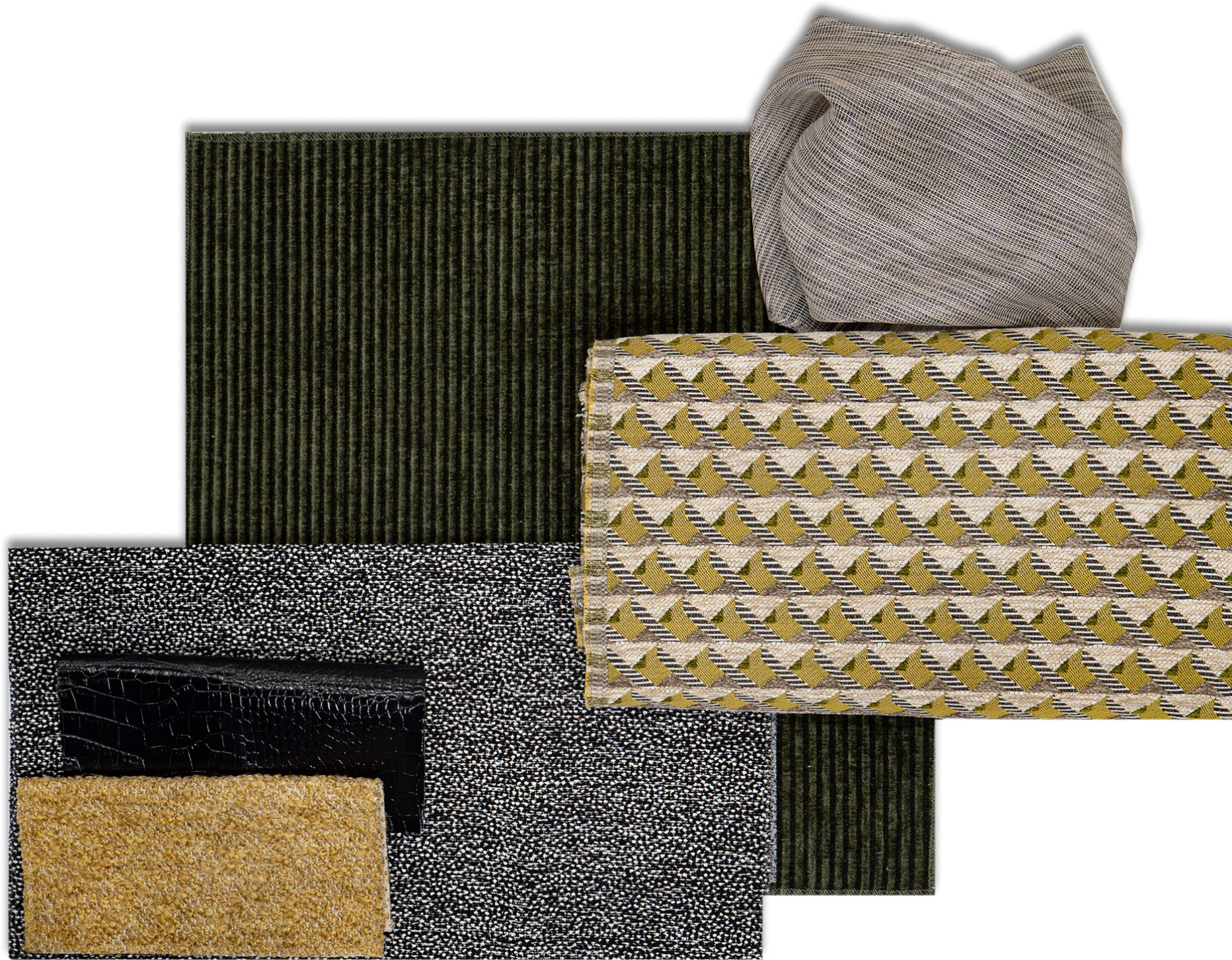


5. BULWARK # 929 Celadon
Performance Wovens
Vol. VII

Click the pattern icon or name to view it on our website

Maxwell

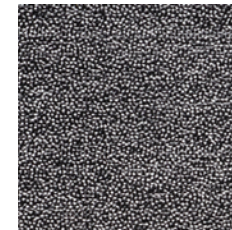
AMARO MONTENEGRO



1. FONDA # 914 Butter
Telafina Season XV



2. LYLE # 750 Lacquer
Easy Rider VIII



3. DOLCETTO # 733 Penguin
Performance Wovens
Vol. VII



4. RAILTOWN # 914 Cucumber
Performance Wovens
Vol. VII



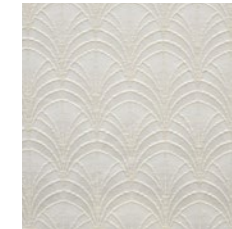
5. SAVIO # 909 Bergamot
Performance Wovens
Vol. VII



5. ROMA # 537 Flagstone
Sheer Paths

Click the pattern icon or name to view it on our website

HYDE PARK



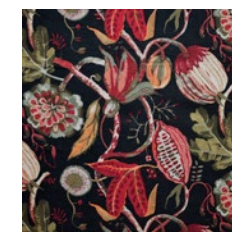
1. GRIFFITH # 928 Cloud
Performance Wovens
Vol. V Silver Sun



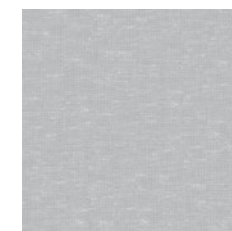
2. FERNANDA # 806 Hot Springs
Performance Wovens
Vol. VII



3. CONIFER # 628 Stream
Performance Wovens
Vol. VII



4. BEAUREGARD # 301 Midnight
Color Theory
Vol. VII Jungle Room



5. SANDRO # 116 Sky
Wide Width Basics II

Click the pattern icon or name to view it on our website

Maxwell

PALISADES PARK



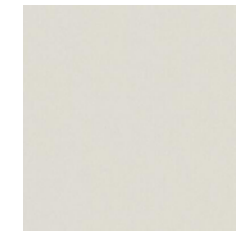
1. KITSILANO # 613 Bluebird
Performance Wovens
Vol. VII



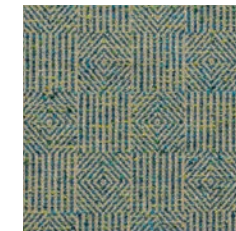
2. GRANGER # 732 Birch
Easy Rider VIII



3. GRANVILLE # 913 Juniper
Performance Wovens
Vol. VII



4. ZAITUN # 553 Marzipan
Pure & Simple XVI



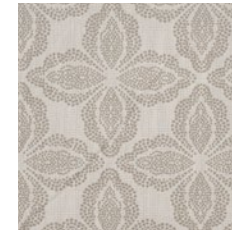
5. CHENIN # 925 Malachite
Performance Wovens
Vol. VII Tidepool



5. ESKER # 635 Sugar
Performance Wovens
Vol. VII

[Click the pattern icon or name to view it on our website](#)

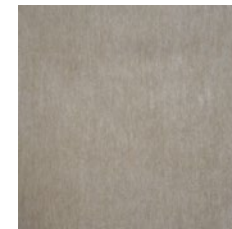
DOVECOTE



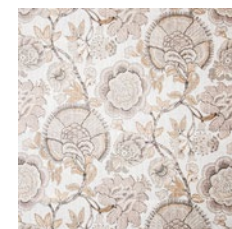
1. PRIORY # 948 Putty
Performance Wovens
Vol. VII



2. ROCKLAND # 744 Shell
Performance Wovens
Vol. VII



3. BELLUNO # 116 Dove
Telafina XVI



4. STANWICK # 514 Fade
Print Gallery II



5. ZAITUN # 554 Fresco
Pure & Simple XVI

[Click the pattern icon or name to view it on our website](#)

TRAILRIDER



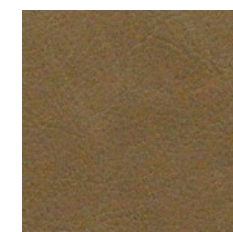
1. ROYAL ROADS # 722 Hyena
Performance Wovens
Vol. VII



2. KERRISDALE # 723 Café
Performance Wovens
Vol. VII



3. QUEENSWOOD # 915 Leaf
Performance Wovens
Vol. VII



4. GRANGER # 770 Coyote
Easy Rider VIII



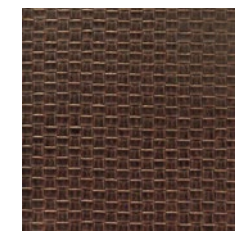
5. FABER # 519 Seaglass
Print Gallery

[Click the pattern icon or name to view it on our website](#)

LION'S MANE



1. SPEARHEAD # 615 Pyrite
Color Theory
Vol. VII Sandalwood



2. BASKETRY # 722 Bittersweet
Easy Rider VIII



3. ANNEX # 713 Pyrite
Performance Wovens
Vol. VII



4. CHENIN # 822 Raisin
Performance Wovens
Vol. VII



5. ELLIS # 821 Malbec
Performance Wovens
Vol. VII

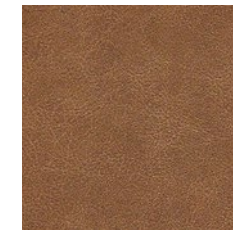
Click the pattern icon or name to view it on our website

Maxwell

YELLOWSTONE



1. GARDEN MAZE # 704 Maize
Performance Wovens
Vol. VII



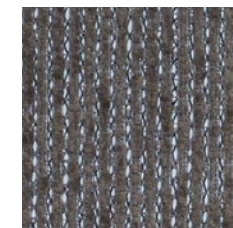
2. TARO # 205 Rum
Easy Rider VI



3. SANDRO # 120 Mink
Wide Width Basics II



4. TABOR # 806 Volcano
Performance Wovens
Vol. VII



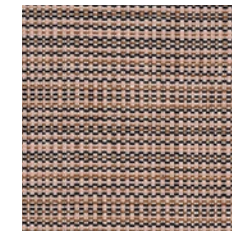
5. KERRISDALE # 719 Pewter
Performance Wovens
Vol. VII



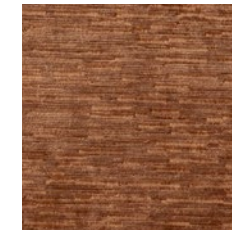
5. MELTON # 730 Silver
Performance Wovens
Vol. VII

Click the pattern icon or name to view it on our website

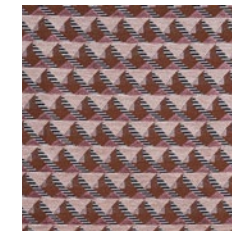
CRÈME DE CASSIS



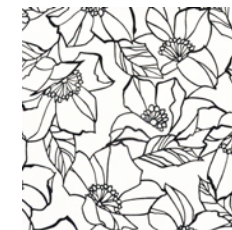
1. SEMILLON # 820 Pink Panther
Performance Wovens
Vol. VII



2. ELLIS # 840 Cedar
Performance Wovens
Vol. VII



3. SAVIO # 819 Damson
Performance Wovens
Vol. VII



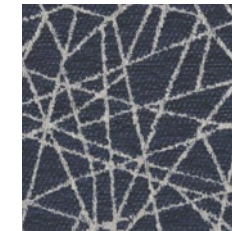
4. DIANA # 439 Domino
Color Theory
Vol. VI Flagstone



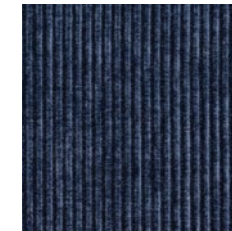
5. SANDRO # 109 Blossom
Wide Width Basics II

Click the pattern icon or name to view it on our website

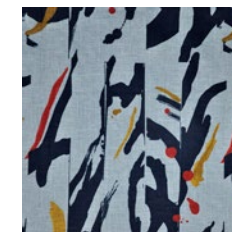
CASPIAN SEA



1. ANNEX # 606 Maine
Performance Wovens
Vol. VII



2. RAILTOWN # 605 Royal
Performance Wovens
Vol. VII



3. PAINTERLY # 202 Azure
Define



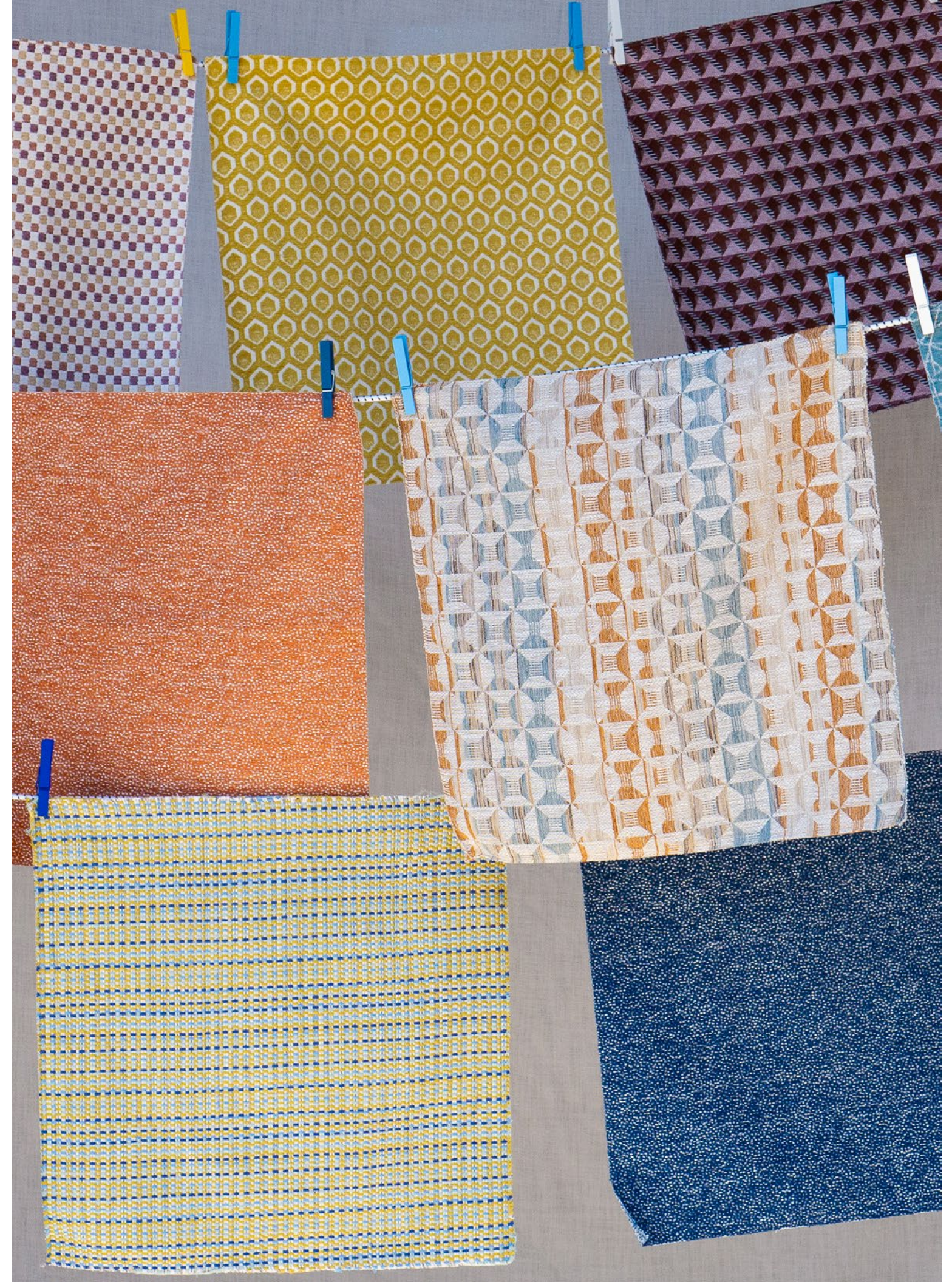
4. BULWARK # 711 Oak
Performance Wovens
Vol. VII

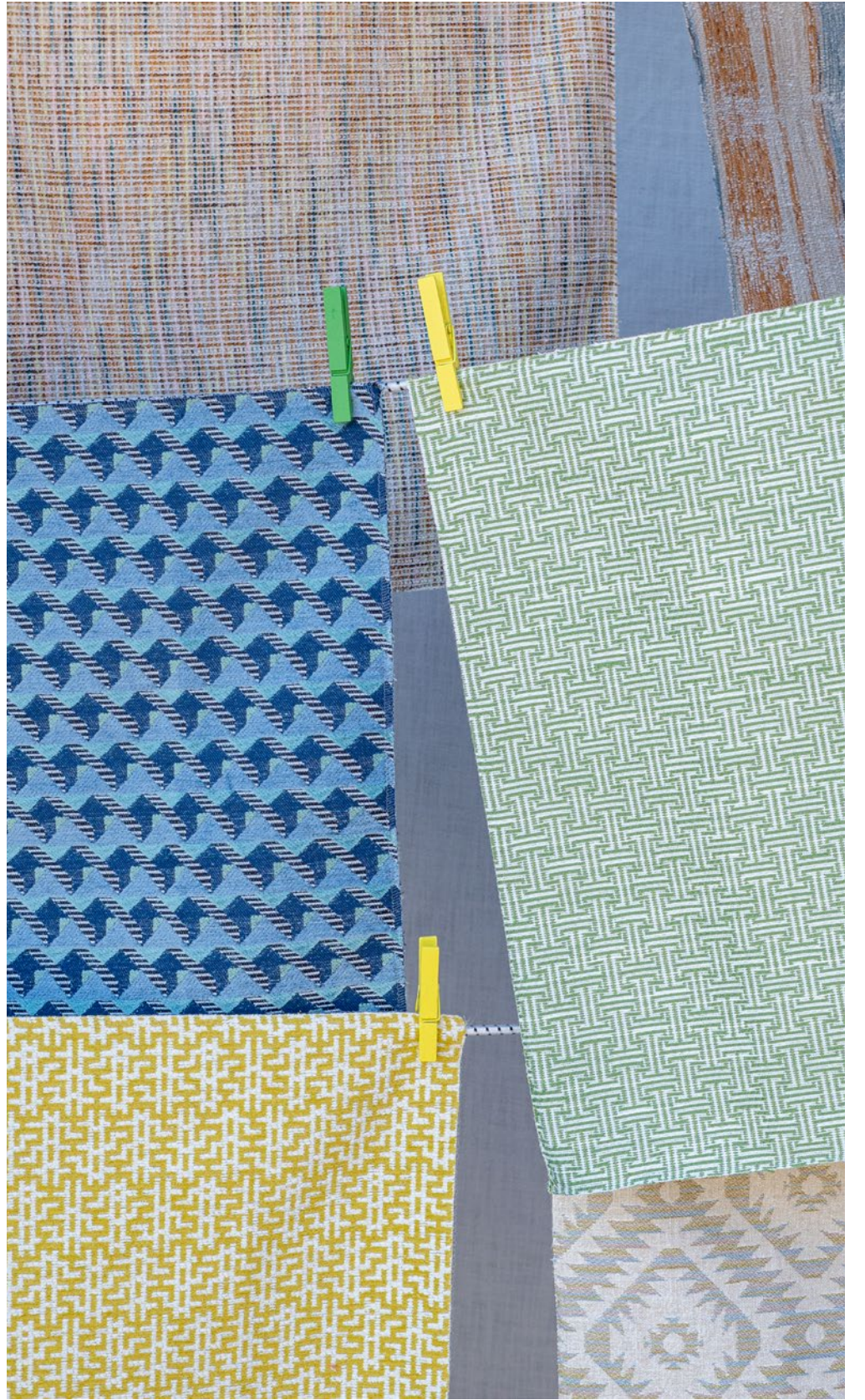
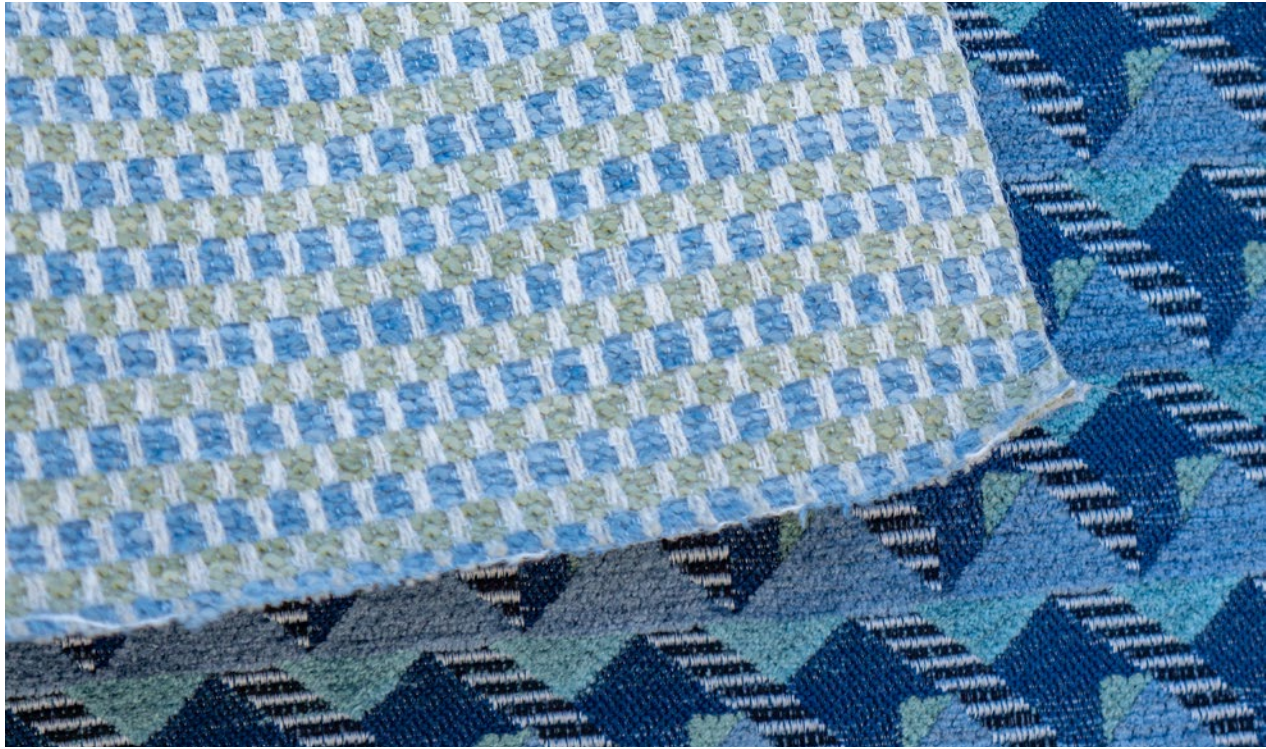


5. SCENE # 730 Cumin
Easy Rider VII

Click the pattern icon or name to view it on our website

Maxwell



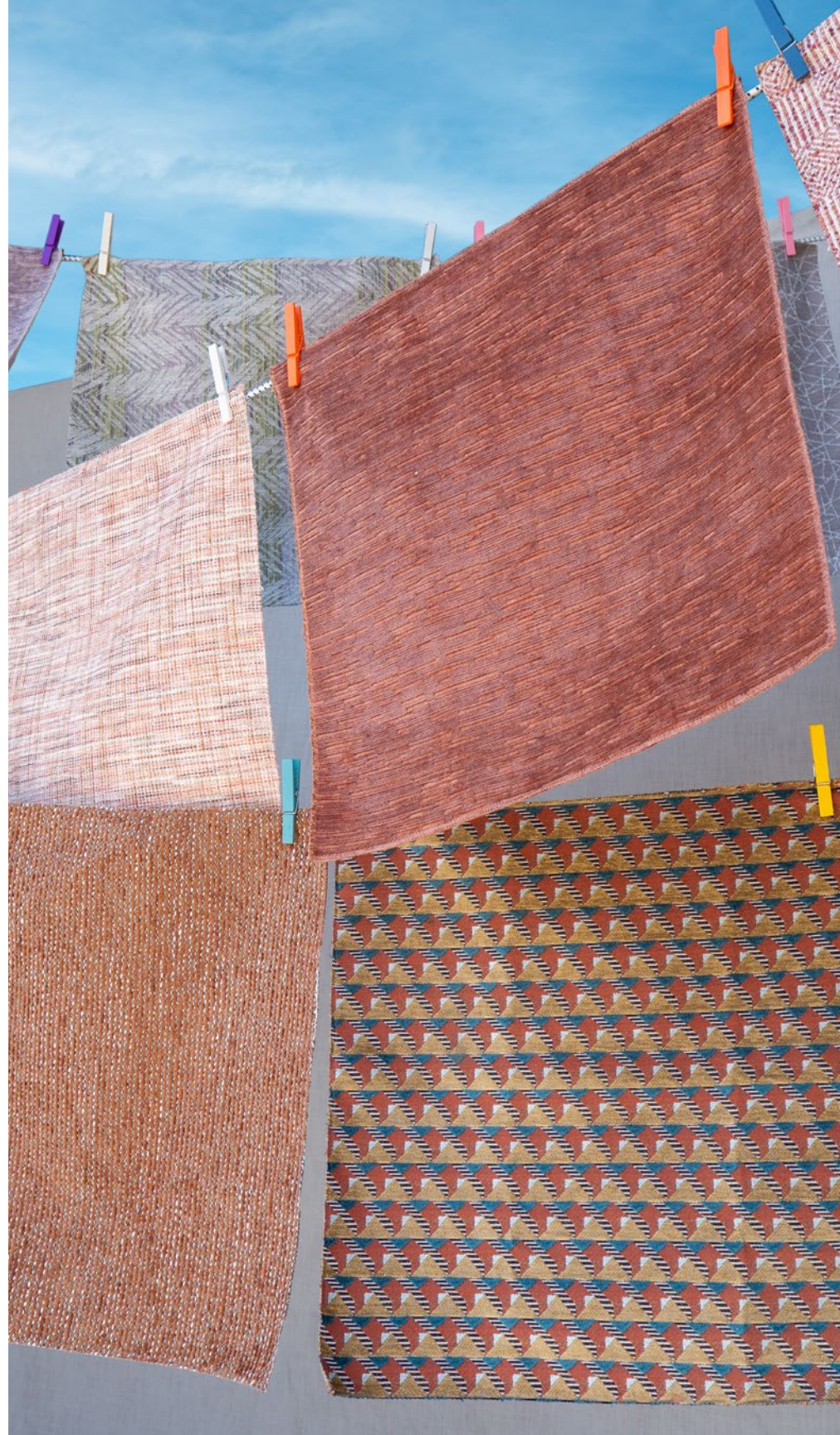


TIDEPPOOL

Maxwell



RHUBARB





GOLD RUSH



BLUE JAY

Maxwell

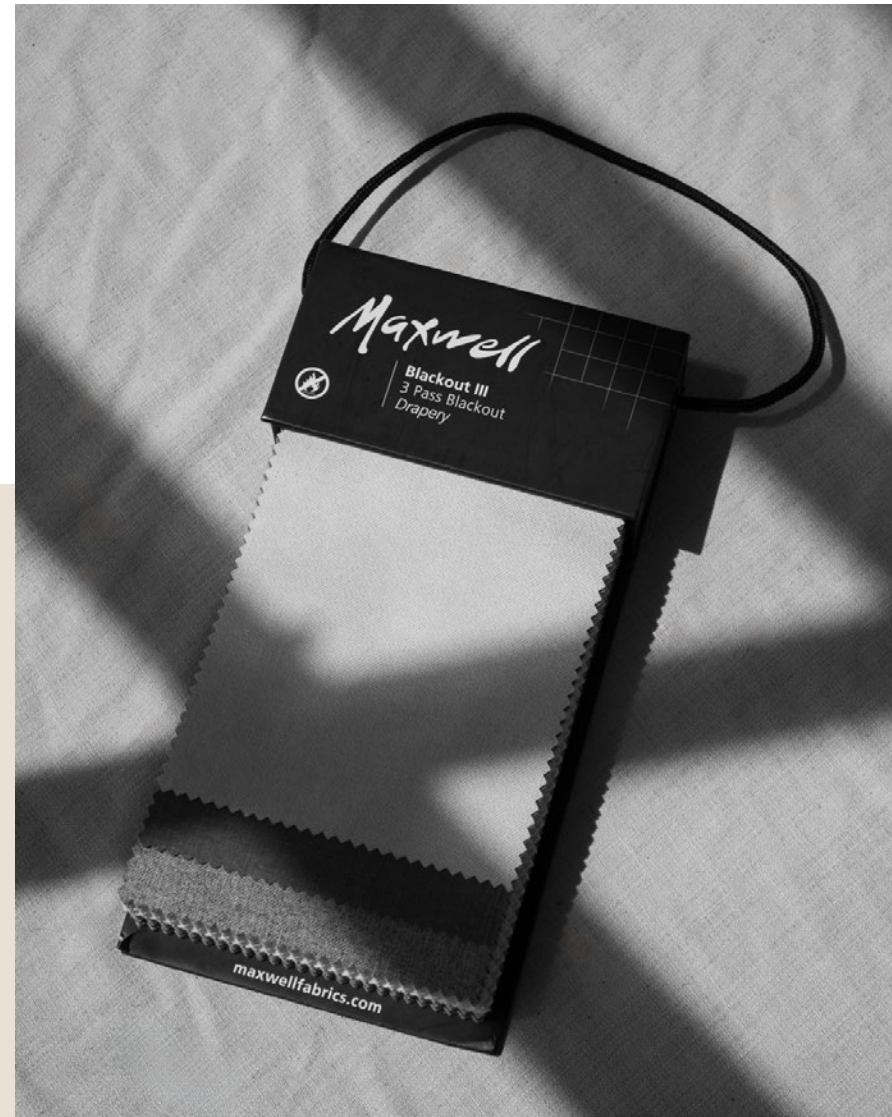


Pure & Simple XVI

Wide Width Basics II



BLACKOUT III



LET US BE YOUR Design Assistant™

Our dedicated in-house design assistant team are unrivaled in the industry. Consider our design assistants your style concierge. If the look you envision for your project is not in our line, our design assistants will work to source or create the perfect textile through our trusted suppliers.



TALK TO THE EXPERTS

Let us assist you by:

- Saving you time
- Offering technical knowledge and suggesting substitutes
- Providing solutions for budgets and lead times
- Stock checking and availability
- Priority sample shipping upon request

CONTACT US

EMAIL

designassistant@maxwellfabrics.com

PHONE

800-663-1159 ext. 1

WEBSITE

maxwellfabrics.com/designassistant

Maxwell