



Maxwell

DEL'ARTE

SPRING 2024

"Spring 2024 is an artful group of lush and detailed designs and textures across three books, from velvet and mohair to vibrant prints"

Maxwell



The image shows a book cover for 'Maxwell Print Gallery II Multi Purpose'. The cover is dark grey with a white grid pattern on the right side. The title 'Maxwell' is written in a white script font, and 'Print Gallery II Multi Purpose' is in a smaller white sans-serif font. Below the title, there is a large, colorful floral print in shades of blue, green, and yellow. The book is placed over a larger background of a similar floral print.

Maxwell

Print Gallery II
Multi Purpose

Print Gallery II

Print Gallery is our category for fresh, large-scale, colorful prints. Print Gallery II adds 12 new patterns, from transitional to mid-century inspired. Suitable for drapery and light upholstery, designs are printed on 100% cotton or natural blend ground cloths. The color palette focuses on clean hues inspired by nature, from oceanic blues and kelp green to tones of ochre and clay.



Maxwell

Click the book image or name to view it on our website

Performance Cut Velvets

This season, we combine the luxury and natural durability of fine Belgian velvet with ALTA cleanable technology. The result is Performance Cut Velvets, a decorative group of patterns that can cross over from high-end residential style into boutique hospitality settings with abrasion ratings of 50,000 double rubs and over. Our design story and palette are inspired by the elegance of Northern Italian mountain towns, featuring trend colors of caper, rust, cobalt and radicchio alongside classic gold and modern black and white combinations.

Maxwell



[Click the book image or name to view it on our website](#)



Telafina XVI

Our Telafina line is dedicated to building a seasonless capsule of must-have luxury constructions with a focus on natural fiber content. Telafina XVI continues that focus with the introduction of Belluno, a sumptuous mohair blend available in 26 rich colorways like blood orange, sequoia, basil and prussian blue with nuanced neutrals of camel, bronze and rootbeer. Mohair velvet is a naturally robust construction and exceeds 150,000 double rubs.

T E L A *f* I N A

[Click the book image or name to view it on our website](#)

V&A Decorative Papers II

The second exclusive collaboration between 1838 Wallcoverings and the world-renowned Victoria and Albert Museum, London. This collection features 9 patterns in over 30 colorways celebrating the artistry and craftsmanship behind each design.

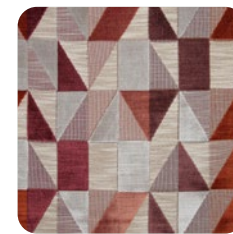
1838
WALLCOVERINGS



[Click the book image or name to view it on our website](#)



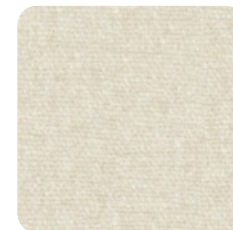
Membrillo



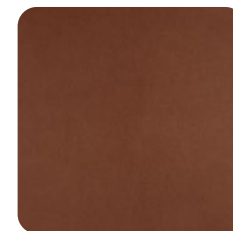
1. Trieste #644 Rhubarb
Performance Cut Velvets



2. Kir Royale #402 Marble
Sheer Threads



3. Rondo #932 Beige
Curled Up VIII



4. Icon #736 Redwood
Easy Rider VII

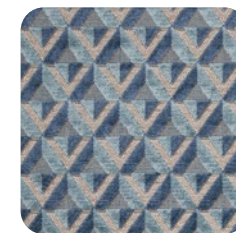


5. Zurich #09 Heather
Glam Velvet

Click the pattern icon or name to view it on our website

Maxwell

Midnight Sun



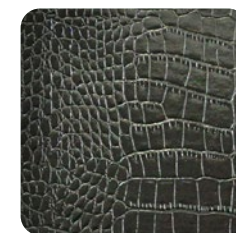
1. Vinovo #603 London Blue
Performance Cut Velvets



2. Palermo #414 Spa
Home and Garden Act VII



3. Pimlico #605 Butterscotch
Color Theory Vol. VII Sandalwood



4. Lyle #750 Lacquer
Easy Rider VIII



Gold Standard



1. Tirano #637 Caper
Performance Cut Velvets



2. Matinee #739 Umber
Easy Rider VII



3. Belluno #117 Camel
Telafina Season XVI



4. Elkhorn #607 Ochre
Color Theory Vol. VII Sandalwood

Click the pattern icon or name to view it on our website

Maxwell

Bronze Age



1. Trento #616 Charcoal
Performance Cut Velvets



2. Belluno #119 Bark
Telafina Season XVI



3. Luxor #728 Aragon
Easy Rider VIII



4. Bouchra #800 Stone
Telafina Season XIII



5. Siberia # Panther
Siberia, Telafina Season XV



6. Shavasana #13 Dune
Curled Up V



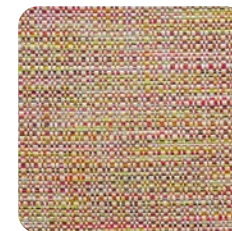
7. Anisha #107 Elmwood
Telafina Season XIV



Petal Power



1. Sedgefield #510 Summer
Print Gallery II



2. Cornwall #203 Orchard
Color Theory Vol. V Sorbet



3. Belluno #111 Sequoia
Telafina Season XVI



4. Owen #102 Cloud
Telafina Season XII

Click the pattern icon or name to view it on our website

Maxwell



Under the Tuscan Sun



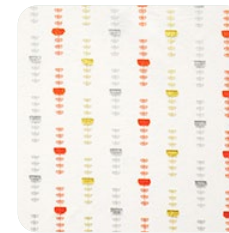
1. Kirkby #517 Mimosa
Print Gallery II



2. Taro #203 Hay
Easy Rider VI



3. Bolzano #636 Midas
Performance Cut Velvets



4. Flag Bearer #305 Fire
Color Theory Vol. V Sorbet



5. Palermo #415 Duckegg
Home & Garden Act VII

Click the pattern icon or name to view it on our website

Maxwell

Coldwater Canyon



1. Selby #518 Paradise
Print Gallery II



2. Granger #752 Night Sky
Easy Rider VIII



3. Severn #901 Coral Reef
Performance Wovens Vol VI Peachtree



4. Beluno #109 Persimmon
Telafina Season XVI

Click the pattern icon or name to view it on our website

Maxwell

Cloud Nine



1. Stanwick #414 Fade
Print Gallery II



2. Diyala #913 Cameo
Telafina Season XV



3. Matsuri #537 Birch
Sheer Craft



4. Lugano #622 Pearl
Performance Cut Velvets



5. Vinovo #623 Salt
Performance Cut Velvets

Click the pattern icon or name to view it on our website

Maxwell

Lowcountry



1. Dewsbury #508 Haze
Print Gallery II



2. Marion #952 Frond
*Performance Wovens
Vol. VI Peachtree*



3. Bolzano #630 Duckegg
Performance Cut Velvets



4. Interstate #512 Surf
Stripes & Checks



5. Maida #318 Pond
*Color Theory
Vol. VII Jungle Room*

Click the pattern icon or name to view it on our website

Maxwell

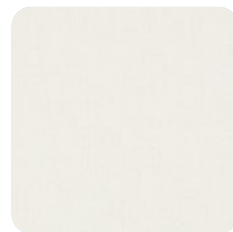




Blue Bayou



1. Covent Garden #501 Tidepool
Print Gallery II



2. Brancusi #111 Cream
Wide-Width Basics



3. Hounslow #308 Lagoon
Color Theory Vol. VII Jungle Room



4. Brossa #604 Neptune
Performance Cut Velvets

Branch Out



1. Dalston #635 Moth
Color Theory Vol. VII Saldalwood



2. Fenchurch #524 Dawn
Print Gallery II



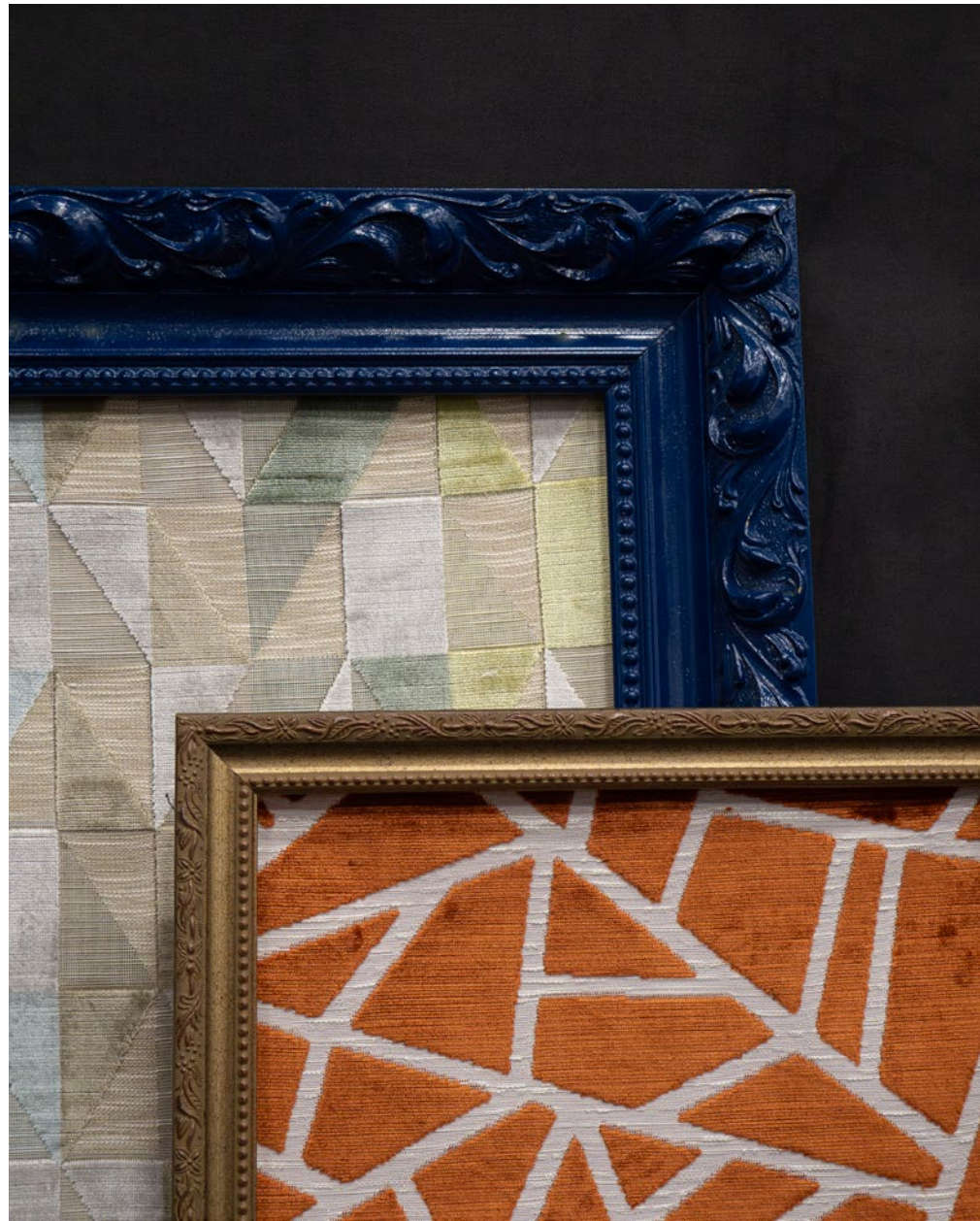
3. Cristobal #903 Cloud
*Telafina Season XIII,
Telafina Season XV*



4. Lecco #610 Shoreline
Performance Cut Velvets

Click the pattern icon or name to view it on our website

Maxwell





Maxwell



DEL'ARTE

LET US BE YOUR Design AssistantTM

Our dedicated in-house design assistant team are unrivaled in the industry. Consider our design assistants your style concierge. If the look you envision for your project is not in our line, our design assistants will work to source or create the perfect textile through our trusted suppliers.



TALK TO THE EXPERTS

Let us assist you by:

- Saving you time
- Offering technical knowledge and suggesting substitutes
- Providing solutions for budgets and lead times
- Stock checking and availability
- Priority sample shipping upon request

CONTACT US

EMAIL

designassistant@maxwellfabrics.com

PHONE

800-663-1159 ext. 1

WEBSITE

maxwellfabrics.com/designassistant

Maxwell