



ATELIER

FALL 2025

FALL 2025

Curled Up X



Home & Garden
Act X - Sheers



Menswear II
Stripes & Checks



Performance
Textures III



Performance
Textures IV



Performance
Textures V



Telafina XVII
Roadline



Wide-Width
Basics III



CURLED UP X

Curled Up is Maxwell's upholstery series of plush & comfortable textures & solids. The tenth installment introduces Brava, a luxe chenille construction with a vintage effect. Stocked with FibreGuard, Brava's standout colorways include autumnal hues plum, pumpkin and burgundy.

Maxwell





HOME & GARDEN ACT X

Home & Garden is Maxwell's category for performance indoor/outdoor fabrics. The tenth installment is a breezy & versatile assortment of wide width sheers in a range of soft neutrals in various weaves and constructions. This assortment is an ideal resource for wide width sheers for both indoor and outdoor applications.

Maxwell

MENSWEAR II

Menswear II is our multi purpose destination for classic haberdashery designs including plaids, checks & stripes rendered in brushed wool blend qualities.

Maxwell





PERFORMANCE TEXTURES III

Following up on the success of Performance Textures II, the third installment introduces another round of must-have performance textures with a focus novelty yarns, bold and chunky constructions and current trend colors.

Maxwell

PERFORMANCE TEXTURES IV

To complement Performance Textures III, the fourth installment introduces a plush chenille woven. The palette ranges from subtle neutral combinations like snow and greige to bolder shades of bronze and deep sea.

Maxwell





PERFORMANCE TEXTURES V

To round out the robust offering of Performance Textures this season, the fifth installment introduces another round of must-have performance textures featuring 4 exclusive patterns that capture a broad color range to suit any interior. All patterns are stylish and durable; treated with FibreGuard for enhanced cleanability.

Maxwell

TELAFINA XVII

Our Telafina line is dedicated to building a capsule of luxury textiles with a focus on natural fiber content. This Fall, Telafina XVII continues to grow this category with an assortment of decorative and textural wovens using boutique yarns, specialized finishing techniques and a rich, timeless color sensibility.

Maxwell





WIDE WIDTH BASICS III

Introducing three new 118" wide drapery textures & solids – Valentina, Lorenzo and Martina. Each pattern woven with a unique texture and character meant to capture a natural look and feel, offered in an extensive range of colors to suit any space.

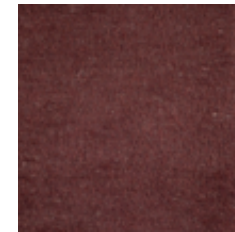
Maxwell



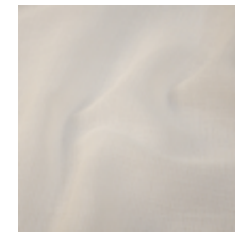
MULBERRY



1. PRESLEY # 506 Berry
Tela fina Season XVII



2. VALLI # 607 Mulberry
Tela fina Season XVII



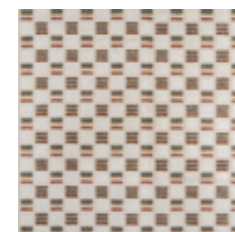
3. CALIZZANO # 328 Linen
Home & Garden Act X - Sheers



4. BRUMMEL # 403 Library
Menswear II - Stripes & Checks



5. WELL DRESSED # 926 Raffia
Performance Textures V

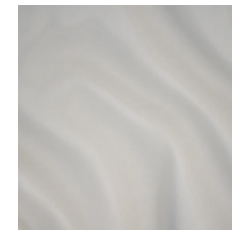


6. ETTA # 204 Rose
Tela fina Season XVII

Click the pattern icon or name to view it on our website



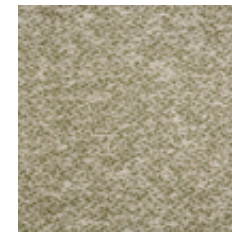
EVERGREEN



- 1. CAMPANIA # 332 Vanilla**
Home & Garden Act X - Sheers



- 2. NORTON # 402 Moss**
Menswear II - Stripes & Checks



- 3. MARVIN # 401 Avocado**
Telafina Season XVII



- 4. ASTER # 503 Sage**
Print Gallery III



- 5. BENNETT # 701 Loden**
Telafina Season XVII



- 6. SWINDON # 617 Fern**
Print Gallery III

Click the pattern icon or name to view it on our website



ASPEN



- 1. MAROTTA # 329 Cashew**
Home & Garden Act X - Sheers



- 2. NEAL # 538 Pearl**
Performance Textures III



- 3. STORROW # 613 Bluff**
Performance Textures IV



- 4. PICCADILLY # 424 Cocoa**
Menswear II - Stripes & Checks



- 5. LEXHAM # 512 Cloud**
Performance Textures III

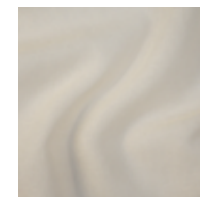


- 6. ASHFORD # 624 Pumice**
Stripes & Checks III

Click the pattern icon or name to view it on our website



DESERT SKY



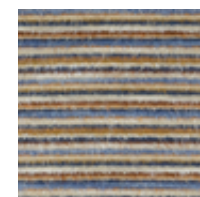
1. PISA # 327 Natural
Home & Garden Act X



2. BRAVA # 833 Storm
Curled Up X



3. CLIFFORD # 423 Rattan
Menswear II - Stripes & Checks



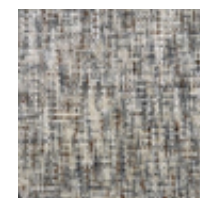
4. SIMONE # 301 Desert Sky
Telafina Season XVII



5. MOREAU # 1003 Lake
Performance Textures V



6. STORROW # 635 Straw
Performance Textures IV

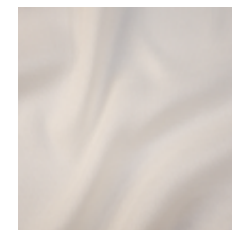


7. STORROW # 611 Pearl
Performance Textures IV

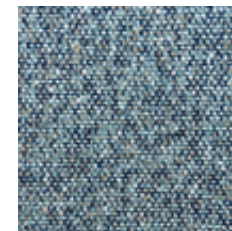
Click the pattern icon or name to view it on our website



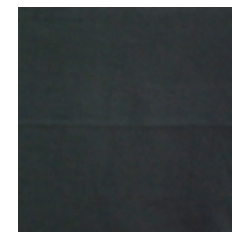
MONTEREY BAY



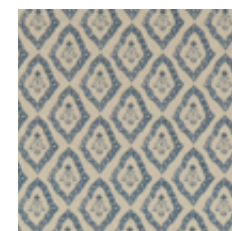
1. AQUILANO # 316 Cornsilk
Home & Garden Act X



2. CAMDEN # 517 Denim
Performance Textures III



3. BENNETT # 707 Admiral
Telafina Season XVII



4. LOTTIE # 558 Blueberry
Print Gallery III



5. WELL DRESSED # 994 Niagara
Performance Textures V

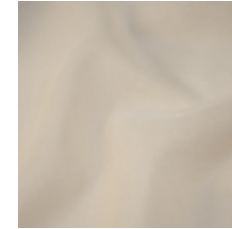


6. HENSLEY # 606 Atlantic
Telafina Season XVII

Click the pattern icon or name to view it on our website



COFFEE HOUSE



1. GENOA # 331 Beige
Home & Garden Act X



2. ARLINGTON # 422 Espresso
Menswear II - Stripes & Checks



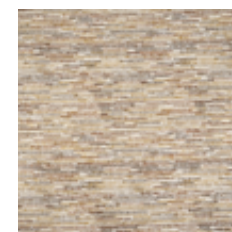
3. LORENZO # 161 Sand
Wide-Width Basics III



4. PRESLEY # 501 Camel
Tela fina Season XVII



5. BENNETT # 705 Butterscotch
Tela fina Season XVII



6. WARWICK # 103 Sienna
Tela fina Season XVII

Click the pattern icon or name to view it on our website

LET US BE YOUR Design AssistantTM

Our dedicated in-house design assistant team are unrivaled in the industry. Consider our design assistants your style concierge. If the look you envision for your project is not in our line, our design assistants will work to source or create the perfect textile through our trusted suppliers.



TALK TO THE EXPERTS

Let us assist you by:

- Saving you time
- Offering technical knowledge and suggesting substitutes
- Providing solutions for budgets and lead times
- Stock checking and availability
- Priority sample shipping upon request

CONTACT US

EMAIL

designassistant@maxwellfabrics.com

PHONE

800-663-1159 ext. 1

WEBSITE

maxwellfabrics.com/designassistant

Maxwell