

Maxwell FABRICATIONS

SPRING 2012



Spring Collections 2012



Comfortably Luxurious Living

This season emphasizes elegant décor, complimented with a modern sensibility, to create a fusion of everyday casual living with formal sophistication and style. Sleek lines are softened with relaxed silhouettes in lush fabrics, while vintage looks are modernized with layers of sumptuous, yet minimalistic textures, creating comfort in luxurious environments.

Comfort & style:

- Create vintage charm with natural fibers & cozy piles
- Soften contemporary decor with shimmery silks & satins
- Add warmth & texture with faux fur

Color trends provide relevance to today's top looks:

- Blue remains strong in masculine dark tones & serene in tones of aqua & teal
- Orange emerges as a top trend color with a burst of energy
- Yellow adds warmth & comfort in shades of golden camel
- Green represents stability in acid & forest tones
- Gray maintains dominance with a clean & calming approach
- Purple continues to add power & luxury to any palette

Jennifer Apple
www.maxwellfabrics.com



Concerto

A Touch of Glam

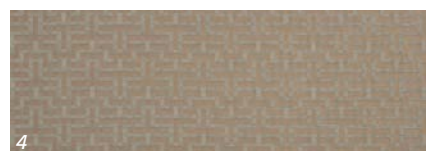
Concerto is a glamorous compilation of iridescent taffeta drapery in a brilliant palette of color.

This collection offers 3 luxurious qualities each with its own personality and character:

- Chopin is the quintessential taffeta with an elegant sheen for just a touch of glamour.
- Mozart has a wonderfully crisp hand and lustrous surface sheen for an extremely luxe look.
- Vivaldi has a distinctively soft hand and smooth drape, perfect for a sleek modern treatment.



1. Pillows left to right: Chopin #625 Spice, Vivaldi #26 Amethyst, Vivaldi #06 Deep Sea, Vivaldi #27 Twilight, & Chopin #625 Spice. Drapes outer: Vivaldi #13 Rose Dust & drapes inner: Vivaldi #26 Amethyst. 2. Pillows top to bottom: Vivaldi #06 Deep Sea, Vivaldi #03 Balsam & Chopin #500 Abyss. Drapes: Vivaldi #11 Gull. 3. Pillows top to bottom: Vivaldi #03 Balsam & Chopin #500 Abyss. Drapes: Vivaldi #11 Gull. 4. Pillows left to right: Mozart #09 Rain Cloud, Vivaldi #27 Twilight, Vivaldi #26 Amethyst & Chopin #625 Spice. Drapes left to right: Vivaldi #13 Rose Dust & Vivaldi #26 Amethyst. 5. Pillows top to bottom: Vivaldi #03 Balsam & Chopin #500 Abyss. Drapes: Vivaldi #11 Gull.



Pop Art Deco Graphic

Pop Art is a bold and masculine art-deco inspired collection in a striking and unique color palette. Graphic patterns come alive in vividly contrasting color combinations or look elegantly subdued in chic neutrals. Either way, the Pop Art collection provides dramatic style for an exclusive look in modern décor.

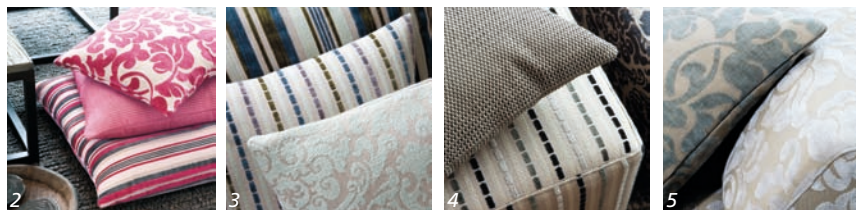
1. Chair: Blueprint #12 Raven. Drape & Pillow: Fever #22 Gold. 2. Cushions: Pom Pom #01 Nut & Blueprint #11 Plaza. Chair: Pom Pom #01 Nut. Drape: Blueprint #11 Plaza. 3. Cushions: Pom Pom #01 Nut & Blueprint #11 Plaza. 4. Blueprint #11 Plaza.

Studio Collection

Live In Style

We are proud to introduce a new upholstery series to our Maxwell brand. The **Studio Collection** is a series of 6 books that will be introduced, two at a time, over the next 3 seasons.

During our travels worldwide we were inspired to create a global variety of upholstery patterns in the most fashion forward designs, colors, and textures for chic, comfortable living.



1. Ottoman: Grona Lund #5 Gunmetal. Chaise frames: Dalarna #12 Seagull. Cushions: Uppland #11 Rain. Pillows: Uppland #11 Rain & Grona Lund #3 Rose. 2. Top to bottom: Uppland #7 Raspberry, Dalarna #7 Geranium & Vasa #3 Petal. 3. Grona Lund #2 Willow, Abba #2 Gem, Vasa #2 Ocean & Dalarna #4 Mist. 4. Dalarna #6 Steel, Abba #5 Stormy Sky & Grona Lund #5 Gunmetal. 5. Pillow: Uppland #5 Abyss. Cushion: Uppland #11 Rain.

A global variety of upholstery patterns designed for chic, comfortable living



Chairs: Sumi #1 Captain. Pillows: Blossom #1 Amethyst.

Studio Kyoto & Stockholm

Inviting Modern Decor

The **Kyoto** collection is a composition of contemporary wool and chenille looks. It's cozy comfort, dressed up in modern sophistication, for a livable & polished setting.

The color palette features beautiful grays, sophisticated navy and soft plums that intermingle and work together to create a calming, yet strong statement.

The **Stockholm** collection was inspired by vintage looks of washed woods and faded fabrics. This collection is shabby-chic, revamped and uplifted. Soft and sumptuous chenille paired with the natural look of textured linen reflects traditional charm with a modern appeal.

The light color palette is tastefully accented with bright tones of fuchsia and acid green, but centers on the usability of naturals and neutral grays.

The **Stockholm** collection is the perfect approach to balance traditional settings with contemporary elements.

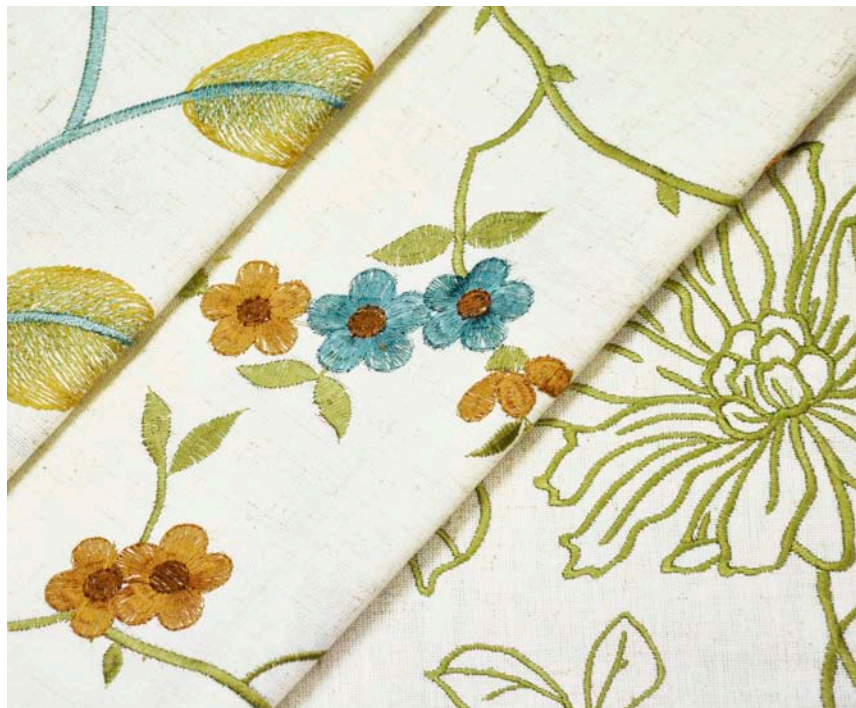
RSVP

Signature Style

RSVP is an eclectic collection of transitional designs woven in a contemporary wool blend construction. Loved for its textural, yet neutral handwriting, wool is an ideal choice for both upholstery, and drapery treatments emphasizing sharp, clean shapes.

The sophisticated, European-inspired color palette, ranging from classic naturals & flannel grays to soft blue & acid green, creates a signature modern classic look.

1. Dinner Party #175 Raven, Dinner Party #110 Iceberg, Dinner Party #105 Mist & Dinner Party #130 Cookie. 2. Chandelier #44 Storm, Dinner Party #105 Mist & Candelabra #100 Raincloud.



Above: Skyhigh #23 Verdigris, Angelina #214 Miami & Jonquil #230 Willow.
Left: Lashes #10 Green Tea.

Palisade Park

Casual Elegance

Palisade Park is a dynamic compilation of nature-inspired embroideries designed exclusively by Maxwell. 6 breath-taking patterns are embroidered on a wonderfully soft and drapeable linen-like base cloth, enabling easy care and usability, while offering diversity in style and color for casual elegance in any décor.



Beautiful Blooms

Printed Charm

Beautiful Blooms is a vintage-inspired print collection exclusive to Maxwell. Designed in the UK, this collection combines modern color with traditional floral patterns creating fresh and feminine looks with an updated shabby-chic feel.



Above: Drapes: Bethany #20 Ocean. Pillows: Babette #25 Reef, Bedelia #10 Denim & Berniece #35 Seaside.

Right: Ottoman: Boone #15 Smalt. Top Pillow: Bernadette #30 Robin's Nest.



Drape: Trailblazer #01 Mushroom.
Ottoman: Trailblazer #25 Sesame.
Sofa: Trailblazer #05 Silver.
Pillows: Trailblazer #03 Shark & Trailblazer #25 Sesame.

Strength & durability in soft, natural looking textures facilitate a minimalistic approach to modern luxury.

Down To Earth

Natural Beauty

Down to Earth is a compilation of 2 linen-like weaves that feature the ease in care and durability offered with man-made fibers. It combines strength and durability with soft, natural looking textures, facilitating a minimalistic approach to modern luxury.

Trailblazer is an understated, yet eye-catching textured fabric that portrays a subtle surface sheen, mimicking the look of a linen/silk blend. Its beautiful color palette was developed in Europe, with a focus on rich earth tones and signature elegant brights.

Foothills is beautifully designed with a natural and rustic looking slubbed texture, harmonized by a soft and airy hand and drape. The color palette emphasizes natural tones and muted spice colors that capture the breezy casual essence of natural linen.

Dynasty

Effortless Style

Dynasty is a striking collection of silky satin stripes with a complimenting jacquard. A dramatic color palette puts a modern spin on this traditional look. Rich neutrals and intensely saturated colors, such as acid green, and deep teal blue, effortlessly result in a graceful, yet bold statement.



Drapes: Shang #15 Leaf & Xia #5 Lizard. Pillows: Zhou #25 Algae, Shang #11 Platinum & Xia #01 Plaza.



Shang #15 Leaf & Xia #5 Lizard.



Xia #01 Plaza & Shang #11 Platinum.

Whether you are updating a room or designing an entire space, this season's collection has what it takes to create decidedly modern classic décor.

Jennifer Apple

*Principal, Director of Design
Maxwell Fabrics*



www.facebook.com/maxwell.fabrics

www.twitter.com/jenniferapple

Maxwell Fabrics

Toll Free Tel 1 800 663 1159

Toll Free Fax 1 800 663 6744

fabrics@maxwellfabrics.com

www.maxwellfabrics.com

Maxwell
EXPRESSIONS IN FABRIC