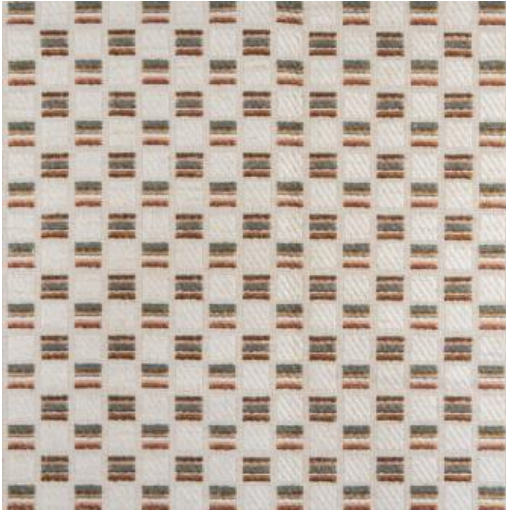


# ETTA

## # 204 ROSE



### PRODUCT INFORMATION

EXCLUSIVE PATTERN AVAILABLE IN 4 COLORS

**PATTERN NAME** ETTA

**COLOR** # 204 ROSE

**PATTERN COMMENT** EXCLUSIVE PATTERN AVAILABLE IN 4 COLORS \*\*\* 2 YARD MINIMUMS - 1/2 YARD INCREMENTS ONLY \*\*\*

**COLOR COMMENT**

**NOTE**

**USAGE** Upholstery

**WIDTH** 55"

**REPEAT** V-2.6", H-2.8"

**CONTENT** 41% VISCOSE  
20% ACRYLIC  
13% LINEN  
15% POLYESTER  
11% COTTON

**CLEANING** DRY CLEAN

**FINISH**

**TESTS** NFPA 260 CLASS 1 (UFAC), CAL 117-2013,  
65,000 DOUBLE RUBS, OEKOTEX

**COUNTRY** TURKEY