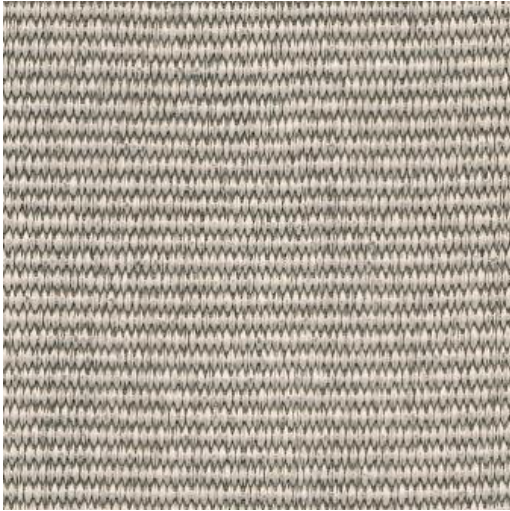


## OCEANSIDE-NJ # 109 SLATE



### PRODUCT INFORMATION

EXCLUSIVE PATTERN AVAILABLE IN 9 COLORS

**PATTERN NAME** OCEANSIDE-NJ

**COLOR** # 109 SLATE

**PATTERN COMMENT** \*\*3 YD MINIMUMS - 1 YARD INCREMENTS ONLY  
- NO CFA'S\*\*

**COLOR COMMENT**

**NOTE**

**USAGE** Upholstery

**WIDTH** 54"

**REPEAT**

**CONTENT** FACE: 100% PHTHALATE FREE VINYL  
BACKING: 100% POLYESTER

**CLEANING** WIPE WITH DAMP CLOTH & MILD SOAP; WIPE DRY. FOR MORE CLEANING INSTRUCTIONS GO TO MAXWELLFABRICS.COM/RESOURCES

**FINISH**

**TESTS** 300,000 DOUBLE RUBS NFPA 260 CLASS I (UFAC), CAL 117-2013, IMO A652 (16) 8.2

**COUNTRY** CHINA