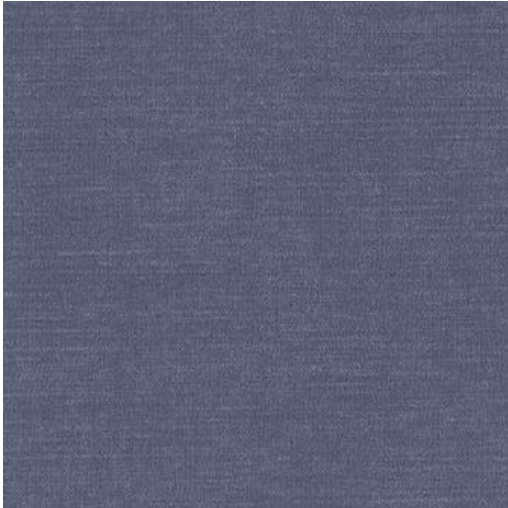


# SAMBAL-NJ # 1077 BORNEO



## PRODUCT INFORMATION

EXCLUSIVE PATTERN AVAILABLE IN 10 COLORS

**PATTERN NAME** SAMBAL-NJ

**COLOR** # 1077 BORNEO

**PATTERN COMMENT** \*\*3 YD MINIMUMS - 1 YARD INCREMENTS ONLY  
- NO CFA'S\*\*

**COLOR COMMENT**

**USAGE** Upholstery

**WIDTH** 54"

### REPEAT

**CONTENT** FACE: 100% POLYURETHANE  
BACKING: 100% POLYESTER

**CLEANING** WIPE WITH DAMP CLOTH & MILD SOAP; WIPE DRY. FOR MORE CLEANING INSTRUCTIONS GO TO MAXWELLFABRICS.COM/RESOURCES

**FINISH** GRAFFITI FREE

**TESTS** 500,000 DOUBLE RUBS NFPA 260 CLASS I (UFAC), CAL 117-2013, IMO A652 (16) 8.55

**COUNTRY** KOREA