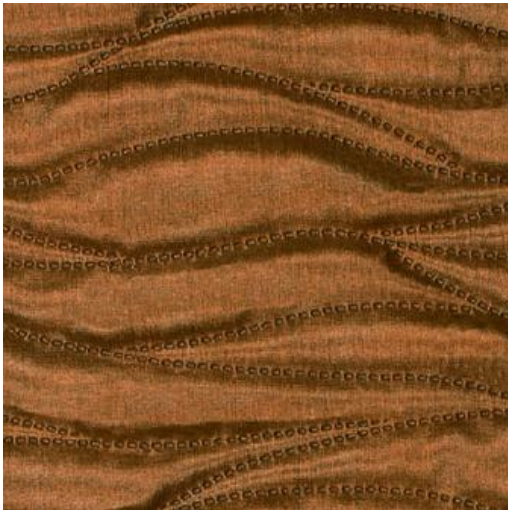


# SOLUNAR-NJ # 551 GNAMMA



## PRODUCT INFORMATION

EXCLUSIVE PATTERN AVAILABLE IN 7 COLORS

**PATTERN NAME** SOLUNAR-NJ

**COLOR** # 551 GNAMMA

**PATTERN COMMENT** \*\*3 YD MINIMUMS - 1 YARD INCREMENTS ONLY  
- NO CFA'S\*\*

**COLOR COMMENT**

**USAGE** Upholstery

**WIDTH** 52"

### REPEAT

**CONTENT** FACE: 100% POLYURETHANE  
BACKING: 100% POLYESTER

**CLEANING** REGULAR MAINTENANCE: WIPE WITH DAMP CLOTH & MILD SOAP; WIPE DRY. FOR MORE CLEANING INSTRUCTIONS GO TO [MAXWELLFABRICS.COM/RESOURCES](http://MAXWELLFABRICS.COM/RESOURCES)

**FINISH** GRAFFITI FREE

**TESTS** 200,000 DOUBLE RUBS NFPA 260 CLASS I (UFAC), CAL 117-2013, IMO A652 (16) 8.30

**COUNTRY** KOREA