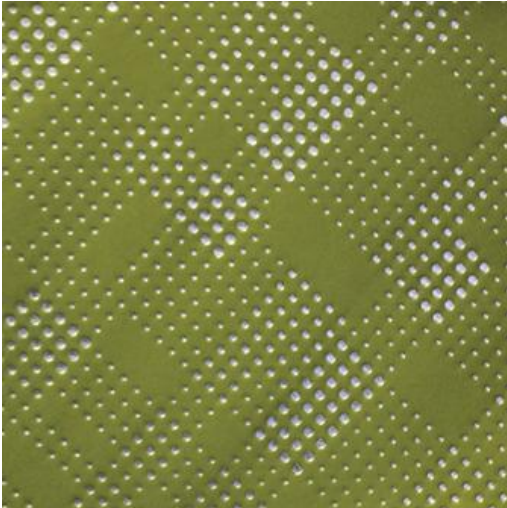


# TARTAN-NJ

## # 907 GREEN TEA



### PRODUCT INFORMATION

EXCLUSIVE PATTERN AVAILABLE IN 11 COLORS

**PATTERN NAME** TARTAN-NJ

**COLOR** # 907 GREEN TEA

**PATTERN COMMENT**

**COLOR COMMENT**

**USAGE** Upholstery

**WIDTH** 53"

**REPEAT** V-13.5" H-13.5"

**CONTENT** FACE: 100% POLYURETHANE  
BACKING: 100% POLYESTER

**CLEANING** REGULAR MAINTENANCE: WIPE WITH DAMP CLOTH & MILD SOAP; WIPE DRY. FOR MORE CLEANING INSTRUCTIONS GO TO [MAXWELLFABRICS.COM/RESOURCES](http://MAXWELLFABRICS.COM/RESOURCES)

**FINISH** GRAFFITI FREE

**TESTS** 200,000 DOUBLE RUBS NFPA 260 CLASS I (UFAC), CAL 117-2013, IMO A652 (16) 8.50

**COUNTRY** KOREA