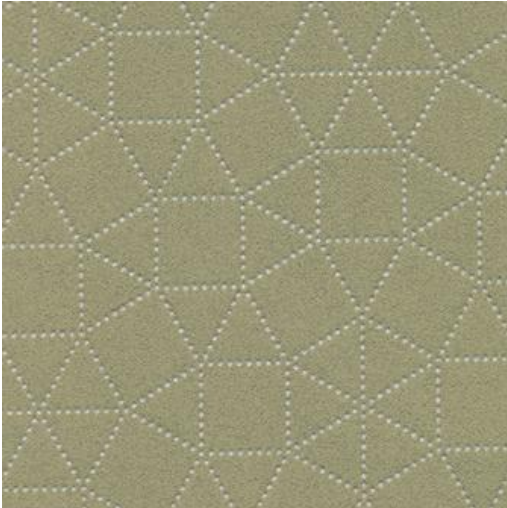


THESIS-NJ # 1152 CACTUS



PRODUCT INFORMATION

EXCLUSIVE PATTERN AVAILABLE IN 7 COLORS

PATTERN NAME THESIS-NJ

COLOR # 1152 CACTUS

PATTERN COMMENT **3 YD MINIMUMS - 1 YARD INCREMENTS ONLY
- NO CFA'S**

COLOR COMMENT

USAGE Upholstery

WIDTH 53"

REPEAT V-7.5" H-7.5

CONTENT FACE: 100% POLYURETHANE
BACKING: 100% POLYESTER

CLEANING REGULAR MAINTENANCE: WIPE WITH DAMP CLOTH & MILD SOAP; WIPE DRY. FOR MORE CLEANING INSTRUCTIONS GO TO MAXWELLFABRICS.COM/RESOURCES

FINISH GRAFFITI FREE

TESTS 200,000 DOUBLE RUBS NFPA 260 CLASS I (UFAC), CAL 117-2013, IMO A652 (16) 8.69

COUNTRY KOREA