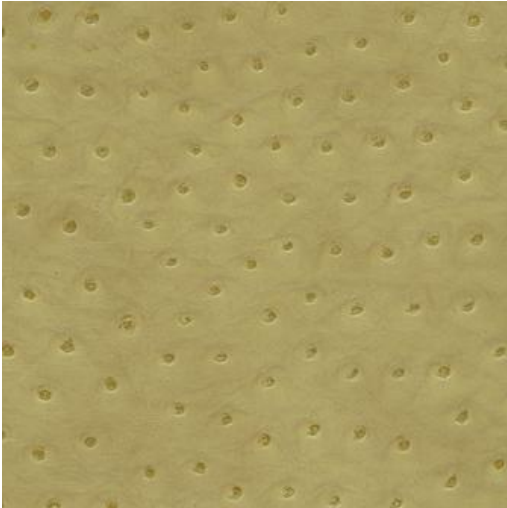


TWITTER-NJ # 293 LETTUCE



PRODUCT INFORMATION

EXCLUSIVE PATTERN AVAILABLE IN 14 COLORS

PATTERN NAME TWITTER-NJ

COLOR # 293 LETTUCE

PATTERN COMMENT **3 YD MINIMUMS - 1 YARD INCREMENTS ONLY
- NO CFA'S**

COLOR COMMENT

USAGE Upholstery

WIDTH 54"

REPEAT

CONTENT FACE: 100% PVC
BACKING: 65% POLYESTER
35% COTTON

CLEANING REGULAR MAINTENANCE: WIPE WITH DAMP CLOTH & MILD SOAP; WIPE DRY. FOR MORE CLEANING INSTRUCTIONS GO TO MAXWELLFABRICS.COM/RESOURCES

FINISH

TESTS 100,000 DOUBLE RUBS NFPA 260 CLASS I (UFAC), CAL 117-2013, IMO A652 (16) 8.10

COUNTRY KOREA