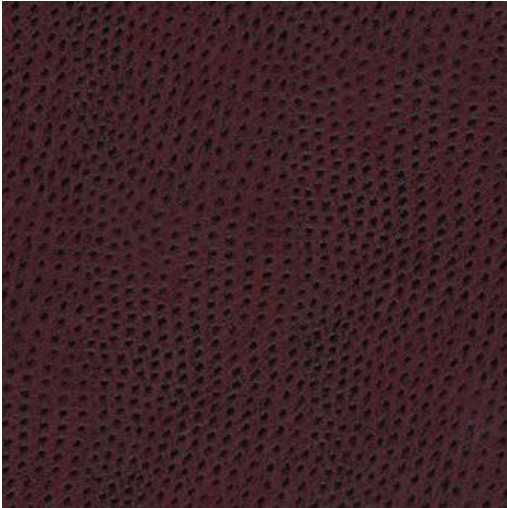


QUILL-NJ # 886 BERRY



PRODUCT INFORMATION

EXCLUSIVE PATTERN AVAILABLE IN 20 COLORS

PATTERN NAME QUILL-NJ

COLOR # 886 BERRY

PATTERN COMMENT **3 YD MINIMUMS - 1 YARD INCREMENTS ONLY
- NO CFA'S**

COLOR COMMENT

USAGE Upholstery

WIDTH 54"

REPEAT V-20.5" H-39"

CONTENT FACE: 100% POLYURETHANE
BACKING: 100% POLYESTER

CLEANING WIPE WITH DAMP CLOTH & MILD SOAP; WIPE DRY. FOR MORE CLEANING INSTRUCTIONS GO TO MAXWELLFABRICS.COM/RESOURCES

FINISH

TESTS 500,000 DOUBLE RUBS NFPA 260 CLASS I (UFAC), CAL 117-2013, IMO A652 (16) 8.49

COUNTRY KOREA