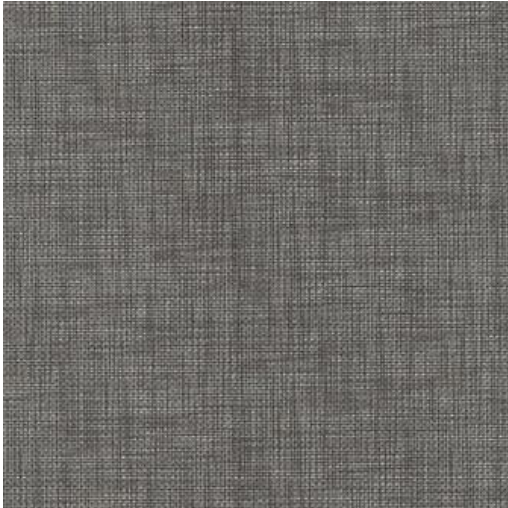


# JOSS-NJ # 1059 TIN



## PRODUCT INFORMATION

---

EXCLUSIVE PATTERN AVAILABLE IN 18 COLORS

---

**PATTERN NAME** JOSS-NJ

---

**COLOR** # 1059 TIN

---

**PATTERN COMMENT** \*\*3 YD MINIMUMS - 1 YARD INCREMENTS ONLY  
- NO CFA'S\*\*

---

**COLOR COMMENT**

---

**WIDTH** 54"

---

**REPEAT**

---

**CONTENT** FACE: 100% POLYURETHANE  
BACKING: 100% POLYESTER

---

**CLEANING** WIPE WITH DAMP CLOTH & MILD SOAP; WIPE DRY. FOR MORE CLEANING INSTRUCTIONS GO TO MAXWELLFABRICS.COM/RESOURCES

---

**FINISH** GRAFFITI FREE

---

**TESTS** 500,000 DOUBLE RUBS NFPA 260 CLASS I (UFAC), CAL 117-2013, IMO A652 (16) 8.61

---

**COUNTRY** KOREA

---