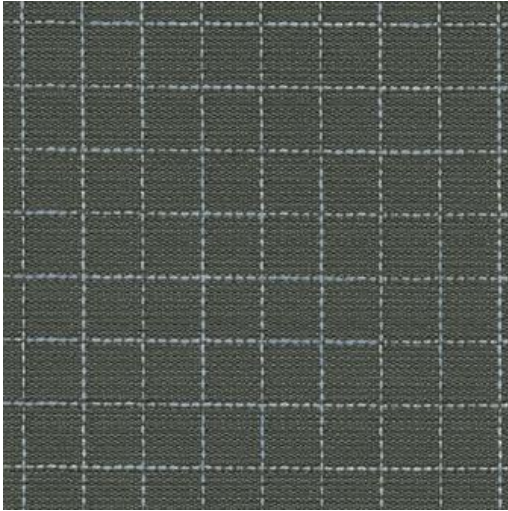


# LEXICON-NJ # 1325 TRENCH



## PRODUCT INFORMATION

EXCLUSIVE PATTERN AVAILABLE IN 4 COLORS

**PATTERN NAME** LEXICON-NJ

**COLOR** # 1325 TRENCH

**PATTERN COMMENT** \*\*3 YD MINIMUMS - 1 YARD INCREMENTS ONLY  
- NO CFA'S\*\*

**COLOR COMMENT**

**USAGE** Upholstery

**WIDTH** 53"

**REPEAT** V-14" H-14"

**CONTENT** FACE: 100% SILICONE BASE: 100%  
POLYURETHANE (POLYCARBONATE)  
BACKING: 100% POLYESTER

**CLEANING** WIPE WITH DAMP CLOTH & MILD SOAP; WIPE  
DRY. FOR MORE CLEANING INSTRUCTIONS  
GO TO MAXWELLFABRICS.COM/RESOURCES

**FINISH** GRAFFITI FREE

**TESTS** 200,000 DOUBLE RUBS NFPA 260 CLASS I  
(UFAC), CAL 117-2013, IMO A652 (16) 8.82

**COUNTRY** KOREA