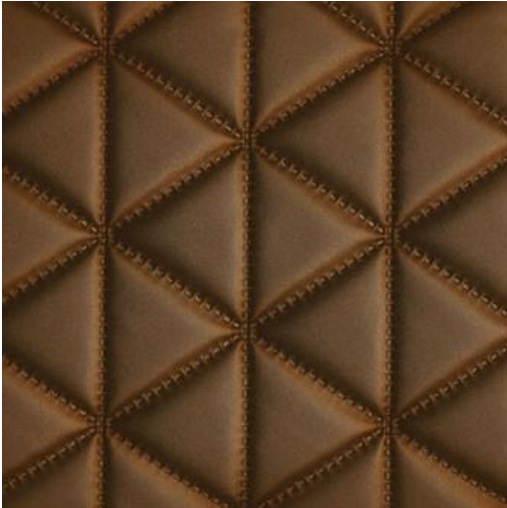


MOLTA-NJ

1235 TREE HOUSE



PRODUCT INFORMATION

EXCLUSIVE PATTERN AVAILABLE IN 8 COLORS

PATTERN NAME MOLTA-NJ

COLOR # 1235 TREE HOUSE

PATTERN COMMENT **3 YD MINIMUMS - 1 YARD INCREMENTS ONLY
- NO CFA'S**

COLOR COMMENT

USAGE Upholstery

WIDTH 52"

REPEAT V-6" H-8.5"

CONTENT FACE: 100% POLYURETHANE
BACKING: 100% POLYESTER

CLEANING WIPE WITH DAMP CLOTH & MILD SOAP; WIPE DRY. FOR MORE CLEANING INSTRUCTIONS GO TO MAXWELLFABRICS.COM/RESOURCES

FINISH GRAFFITI FREE

TESTS 200,000 DOUBLE RUBS NFPA 260 CLASS I (UFAC), CAL 117-2013, IMO A652 (16) 8.76

COUNTRY KOREA