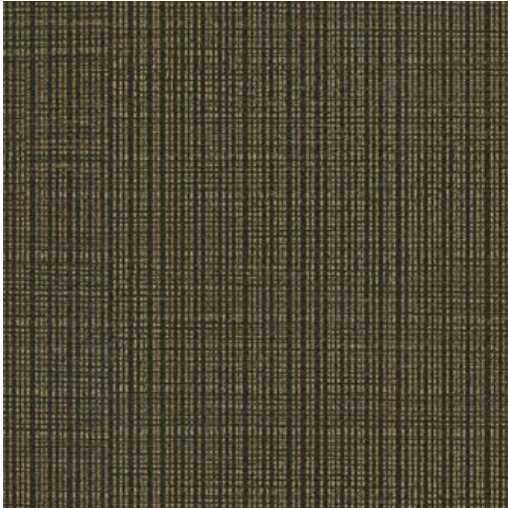


BOURNEMOUTH-NJ # 628 BARLEY



PRODUCT INFORMATION

EXCLUSIVE PATTERN AVAILABLE IN 8 COLORS

PATTERN NAME BOURNEMOUTH-NJ

COLOR # 628 BARLEY

PATTERN COMMENT **3 YD MINIMUMS - 1 YARD INCREMENTS ONLY
- NO CFA'S**

COLOR COMMENT

USAGE Upholstery

WIDTH 53"

REPEAT

CONTENT FACE: 100% SILICONE BASE: 100%
POLYURETHANE (POLYCARBONATE)
BACKING: 100% POLYESTER

CLEANING WIPE WITH DAMP CLOTH & MILD SOAP; WIPE
DRY. FOR MORE CLEANING INSTRUCTIONS
GO TO MAXWELLFABRICS.COM/RESOURCES

FINISH GRAFFITI FREE

TESTS 200,000 DOUBLE RUBS NFPA 260 CLASS I
(UFAC), CAL 117-2013, IMO A652 (16) 8.36

COUNTRY KOREA