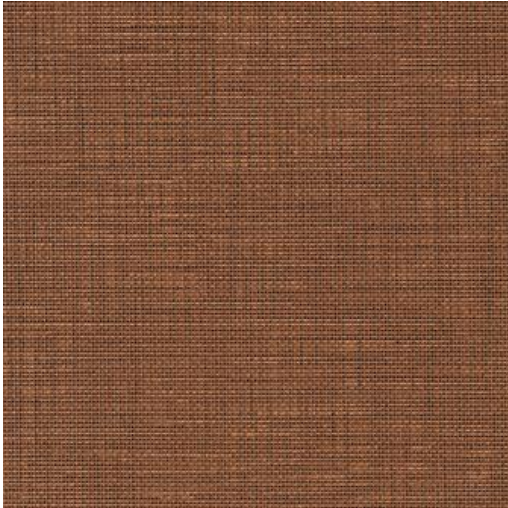


## ELITE-NJ # 941 ALMOND



### PRODUCT INFORMATION

EXCLUSIVE PATTERN AVAILABLE IN 15 COLORS

**PATTERN NAME** ELITE-NJ

**COLOR** # 941 ALMOND

**PATTERN COMMENT** \*\*3 YD MINIMUMS - 1 YARD INCREMENTS ONLY  
- NO CFA'S\*\*

**COLOR COMMENT**

**USAGE** Upholstery

**WIDTH** 54"

#### REPEAT

**CONTENT** FACE: 100% PVC  
BACKING: 100% POLYESTER

**CLEANING** WIPE WITH DAMP CLOTH & MILD SOAP; WIPE DRY. FOR MORE CLEANING INSTRUCTIONS GO TO MAXWELLFABRICS.COM/RESOURCES

**FINISH** GRAFFITI FREE

**TESTS** 100,000 DOUBLE RUBS NFPA 260 CLASS I (UFAC), CAL 117-2013, IMO A652 (16) 8.53

**COUNTRY** KOREA