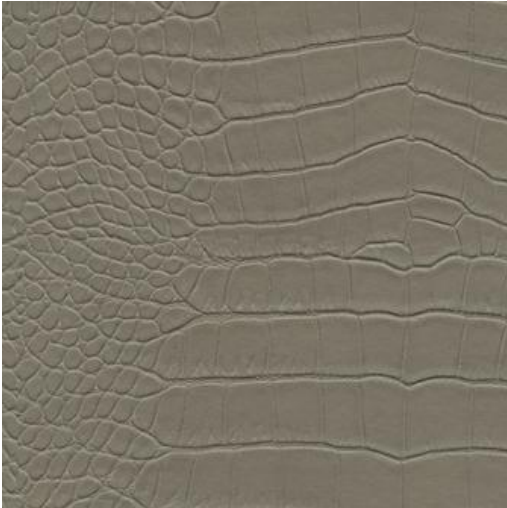


# FLOTILLA-NJ # 450 CRACKED



## PRODUCT INFORMATION

EXCLUSIVE PATTERN AVAILABLE IN 13 COLORS

**PATTERN NAME** FLOTILLA-NJ

**COLOR** # 450 CRACKED

**PATTERN COMMENT** \*\*3 YD MINIMUMS - 1 YARD INCREMENTS ONLY  
- NO CFA'S\*\*

**COLOR COMMENT**

**USAGE** Upholstery

**WIDTH** 54"

**REPEAT** V-9.7" H-9.4"

**CONTENT** FACE: 100% PVC  
BACKING: 65% POLYESTER  
35% COTTON

**CLEANING** WIPE WITH DAMP CLOTH & MILD SOAP; WIPE DRY. FOR MORE CLEANING INSTRUCTIONS GO TO MAXWELLFABRICS.COM/RESOURCES

**FINISH**

**TESTS** 100,000 DOUBLE RUBS NFPA 260 CLASS I (UFAC), CAL 117-2013, IMO A652 (16) 8.23

**COUNTRY** KOREA