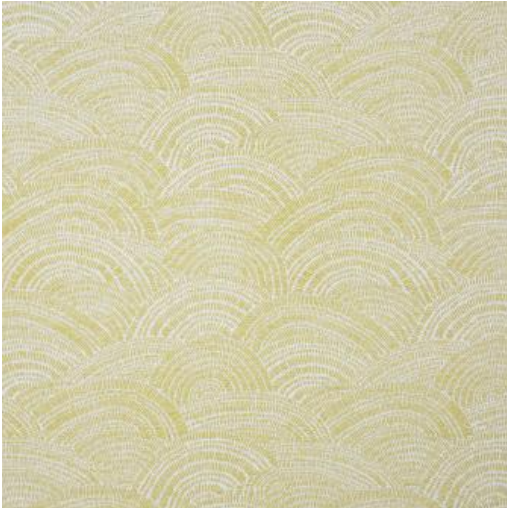


# PEPPERLAND # 407 CITRINE



## PRODUCT INFORMATION

---

### EXCLUSIVE PATTERN AVAILABLE IN 6 COLORS

---

**PATTERN NAME** PEPPERLAND

**COLOR** # 407 CITRINE

**PATTERN COMMENT** EXCLUSIVE PATTERN AVAILABLE IN 7 COLOURS

**COLOR COMMENT**

---

### NOTE

**USAGE** Clearance Items Only, Upholstery

**WIDTH** 57.75"

**REPEAT** V-18"H-14.3"

**CONTENT** 52% POLYESTER/34% RAYON 14% RECYCLED COTTON

**CLEANING** DRY CLEAN

---

### FINISH

**TESTS** 33,000 DOUBLE RUBS NFPA 260 CLASS 1(UFAC) - CAL 117-2013  
NFPA 260 CLASS 1(UFAC) - CAL 117-2013

**COUNTRY** USA

**WAREHOUSE** North CarolinaNorth Carolina

---