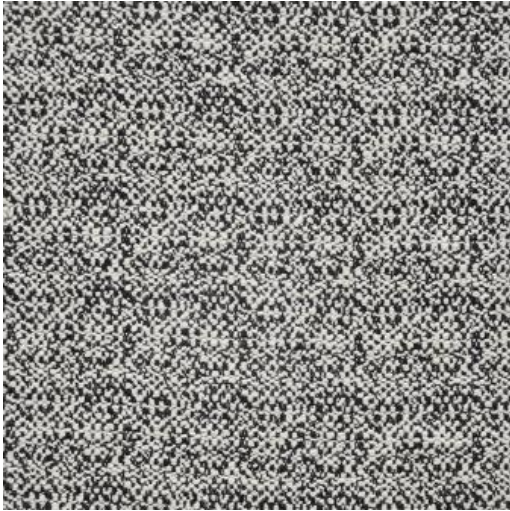


# LEROUX

## # 549 MALAMUTE



### PRODUCT INFORMATION

EXCLUSIVE PATTERN AVAILABLE IN 11 COLORS

PATTERN NAME **LEROUX**

COLOR **# 549 MALAMUTE**

PATTERN COMMENT EXCLUSIVE PATTERN AVAILABLE IN 10 COLOURS \*\*\* 2 YARD MINIMUMS - 1/2 YARD INCREMENTS ONLY \*\*\*

COLOR COMMENT

USAGE Upholstery

WIDTH 54"

REPEAT

CONTENT 34% POST INDUSTRIAL COTTON/ 23% POST INDUSTRIAL POLYESTER/ 21% WOOL 21% NYLON/ 1% POLYESTER

CLEANING DRY CLEAN RECOMMENDED, LIGHT ACRYLIC BACKING

FINISH

TESTS 30,000 DOUBLE RUBS NFPA 260 CLASS 1(UFAC) - CAL 117-2013  
NFPA 260 CLASS 1(UFAC) - CAL 117-2013

COUNTRY USA

WAREHOUSE North CarolinaNorth Carolina