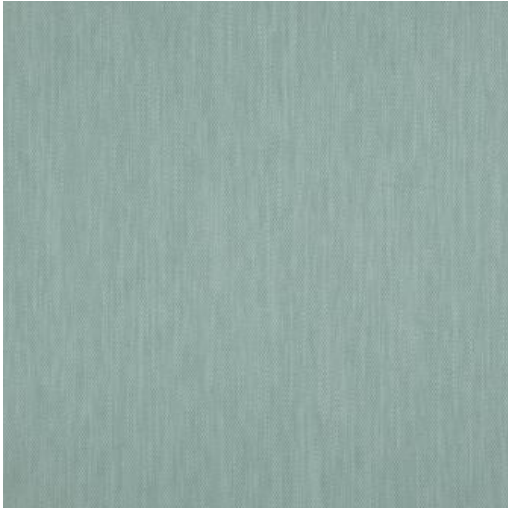


HILDA

25 CELADON



PRODUCT INFORMATION

EXCLUSIVE PATTERN AVAILABLE IN 35 COLORS

PATTERN NAME **HILDA**

COLOR **# 25 CELADON**

PATTERN COMMENT EXCLUSIVE PATTERN AVAILABLE IN 35 COLOURS **2 YD MINIMUMS-1/2 YARD INCREMENTS ONLY- NO CFA'S

COLOR COMMENT

USAGE Drapery, Multi-Purpose, Upholstery

WIDTH 56"

REPEAT

CONTENT 70% POLYESTER/25% COTTON 5% LINEN

CLEANING WSH BLW 30 GENTLE-IRON MED.- DRYCLEAN FIBREGUARD STAIN FREE TECHNOLOGY

FINISH

NOTES FIBREGUARD STAIN FREE TECHNOLOGY

TESTS 115,000 DOUBLE RUBS - OEKOTEX NFPA 260 CLASS 1(UFAC) - CAL 117-2013 NFPA 260 CLASS 1(UFAC) - CAL 117-2013

COUNTRY INDIA

WAREHOUSE North CarolinaNorth Carolina