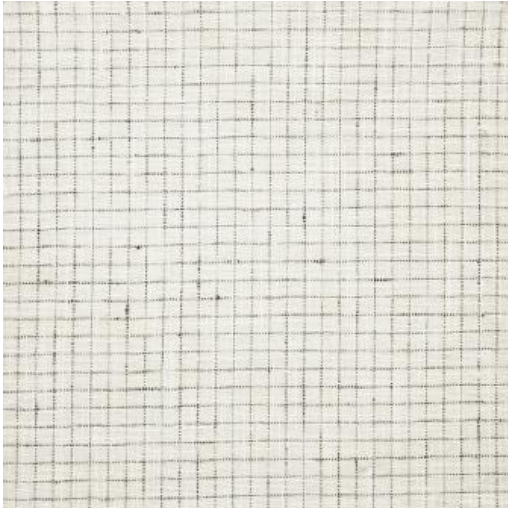


# RIGHT ANGLES # 680 MINK



## PRODUCT INFORMATION

EXCLUSIVE PATTERN AVAILABLE IN 3 COLORS

PATTERN NAME    **RIGHT ANGLES**

COLOR                **# 680 MINK**

PATTERN COMMENT    AVAILABLE IN 3 COLOURS

COLOR COMMENT

USAGE                Drapery, Multi-Purpose, Light Upholstery

WIDTH                54"

REPEAT              V&H-0.6"

CONTENT             100% POLYESTER

CLEANING            DRY CLEAN STAIN REPELLENT

FINISH

NOTES                STAIN REPELLENT

TESTS                20,000 DOUBLE RUBS NFPA 260 CLASS 1(UFAC) - CAL 117-2013  
NFPA 260 CLASS 1(UFAC) - CAL 117-2013

COUNTRY            INDIA

WAREHOUSE        North CarolinaNorth Carolina