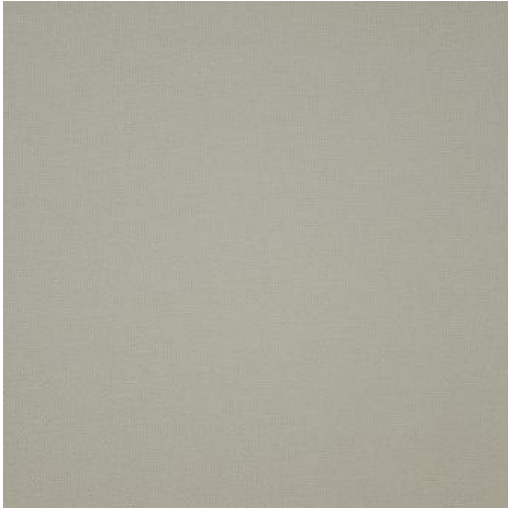


BROOME-ESS

207 CREME



PRODUCT INFORMATION

EXCLUSIVE PATTERN AVAILABLE IN 18 COLORS

PATTERN NAME **BROOME-ESS**

COLOR **# 207 CREME**

PATTERN COMMENT AVAILABLE IN 21 COLOURS **2 YD
MINIMUMS-1/2 YARD INCREMENTS ONLY-
NO CFA'S

COLOR
COMMENT

USAGE Upholstery

WIDTH 57"

REPEAT

CONTENT 100% POLYESTER

CLEANING WASH BELOW 30 - IRON LOW - DRY
CLEAN

FINISH

TESTS 100,000 DOUBLE RUBS NFPA 260 CLASS
1(UFAC) - CAL 117-2013
NFPA 260 CLASS 1(UFAC) - CAL 117-2013

COUNTRY CHINA

WAREHOUSE North CarolinaNorth Carolina