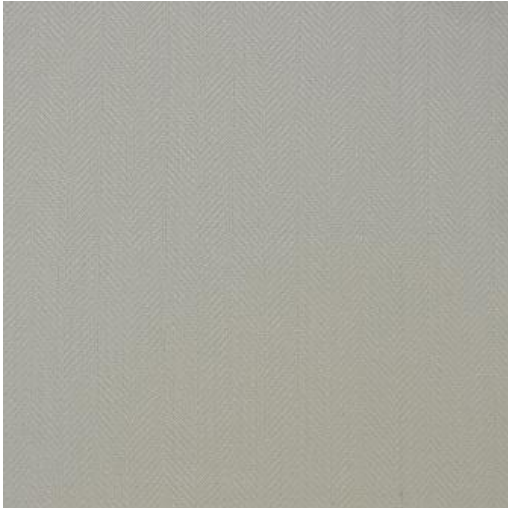


# TOMPKINS-ESS

## # 103 ANGEL



### PRODUCT INFORMATION

EXCLUSIVE PATTERN AVAILABLE IN 5 COLORS

PATTERN NAME **TOMPKINS-ESS**

COLOR **# 103 ANGEL**

PATTERN COMMENT AVAILABLE IN 7 COLOURS \*\*2 YD  
MINIMUMS-1/2 YARD INCREMENTS ONLY-  
NO CFA'S

COLOR  
COMMENT

USAGE Upholstery

WIDTH 56"

REPEAT H-1.75"

CONTENT 100% POLYESTER

CLEANING WASH BELOW 30 RAILROADED

FINISH

NOTES RAILROADED

TESTS 100,000 DOUBLE RUBS NFPA 260 CLASS  
1(UFAC) - CAL 117-2013  
NFPA 260 CLASS 1(UFAC) - CAL 117-2013

COUNTRY CHINA

WAREHOUSE North CarolinaNorth Carolina