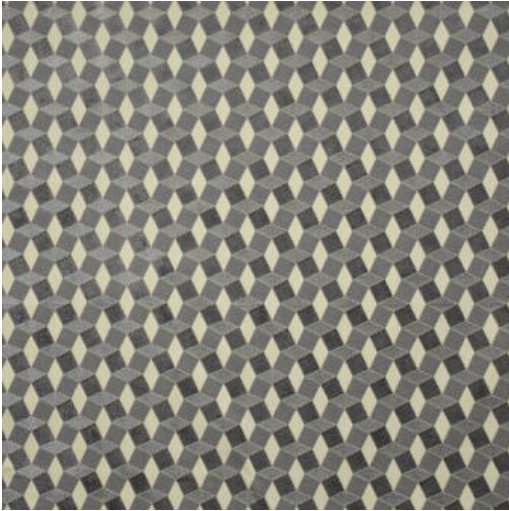


PERSPECTIVE # 778 STEEL



PRODUCT INFORMATION

EXCLUSIVE PATTERN AVAILABLE IN 2 COLORS

PATTERN NAME **PERSPECTIVE**

COLOR **# 778 STEEL**

PATTERN COMMENT EXCLUSIVE PATTERN AVAILABLE IN 7 COLOURS *** 2 YARD MINIMUMS - 1/2 YARD INCREMENTS ONLY ***

COLOR COMMENT

NOTE

USAGE Upholstery

WIDTH 55"

REPEAT V&H-2.7"

CONTENT 55% SPUN VISCOSE 45% COTTON

CLEANING DRY CLEAN ONLY

FINISH

TESTS 30,000 DOUBLE RUBS NFPA 260 CLASS 1(UFAC) - CAL 117-2013
NFPA 260 CLASS 1(UFAC) - CAL 117-2013

COUNTRY INDIA

WAREHOUSE North CarolinaNorth Carolina