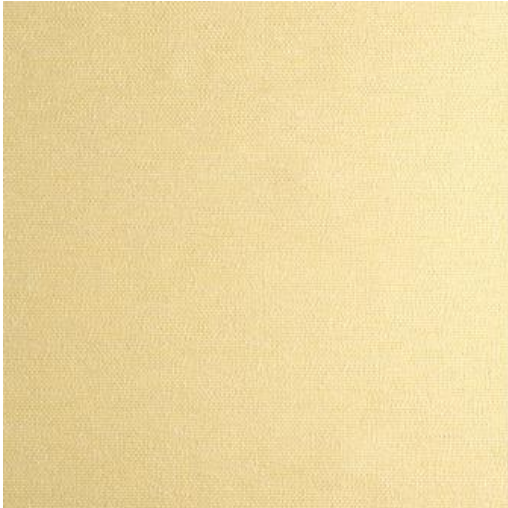


SANDY POINT # 091 TINSEL



PRODUCT INFORMATION

EXCLUSIVE PATTERN AVAILABLE IN 4 COLORS

PATTERN NAME SANDY POINT

COLOR # 091 TINSEL

PATTERN COMMENT EXCLUSIVE PATTERN PERFORMANCE FABRIC AVAILABLE IN 4 COLOURS

COLOR COMMENT

USAGE Drapery, Multi-Purpose, Upholstery, Indoor/Outdoor

WIDTH 54.3"

REPEAT

CONTENT 100% SOLUTION DYED ACRYLIC

CLEANING WSH BELOW 30-IRON LOW-NO BLEACH-DRYCLEAN WATER REPELLENT - MILDEW RESISTANT

FINISH

NOTES WATER REPELLENT - MILDEW RESISTANT

TESTS 20,000 DOUBLE RUBS NFPA 260 CLASS 1(UFAC) - CAL 117-OEKOTEX NFPA 260 CLASS 1(UFAC) - CAL 117-OEKOTEX

COUNTRY USA

WAREHOUSE North CarolinaNorth Carolina